



BACKFLOW PREVENTERS

Wastewater can backflow into buildings whenever wastewater can no longer drain off optimally into the public sewers. The dimensioning of drainage installations today takes into consideration economic aspects and selfcleaning effects based on average rainfall events. However, heavy rainfall which exceeds the reference rainfall level can also occur. This means that the drainage installations can be overloaded at any time. In addition to periods of heavy rainfall, wastewater can also be prevented from draining off as quickly as required by unwanted reductions in pipe cross sections caused by deposits or blockages in sewer pipes, not to mention cracked pipes, pump failures in public sewers, and floods. All of the mentioned above can lead into backflow.

The ACO JUNIOR® cellar drain with backflow stop

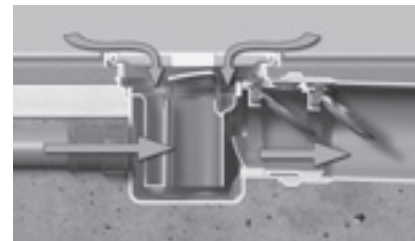
The ACO JUNIOR® cellar drain with backflow stop is a Type 5 backflow stop in accordance with EN 13564. Because of its compact dimensions, this cellar drain is ideal for refurbishing cellars where the drainage systems are being upgraded by installing a backflow stop in one of the old drains. The ACO JUNIOR® cellar drain with backflow stop has two flaps including an emergency seal. It is installed in the floor plate. Wastewater enters the drain via the grating. It is also possible to connect drainage installations to the drain, such as showers, washing machines or sinks lying beneath the backflow level, by adding a DN 50 inlet to the drain on site.

During normal operating conditions, the flaps hang loose. The force of flowing wastewater pushes open the flap in the flow direction to drain the wastewater in the direction of the sewer. If there is backflow, the wastewater backing up from the sewer flows against the normal flow direction and comes into contact with the outer backflow

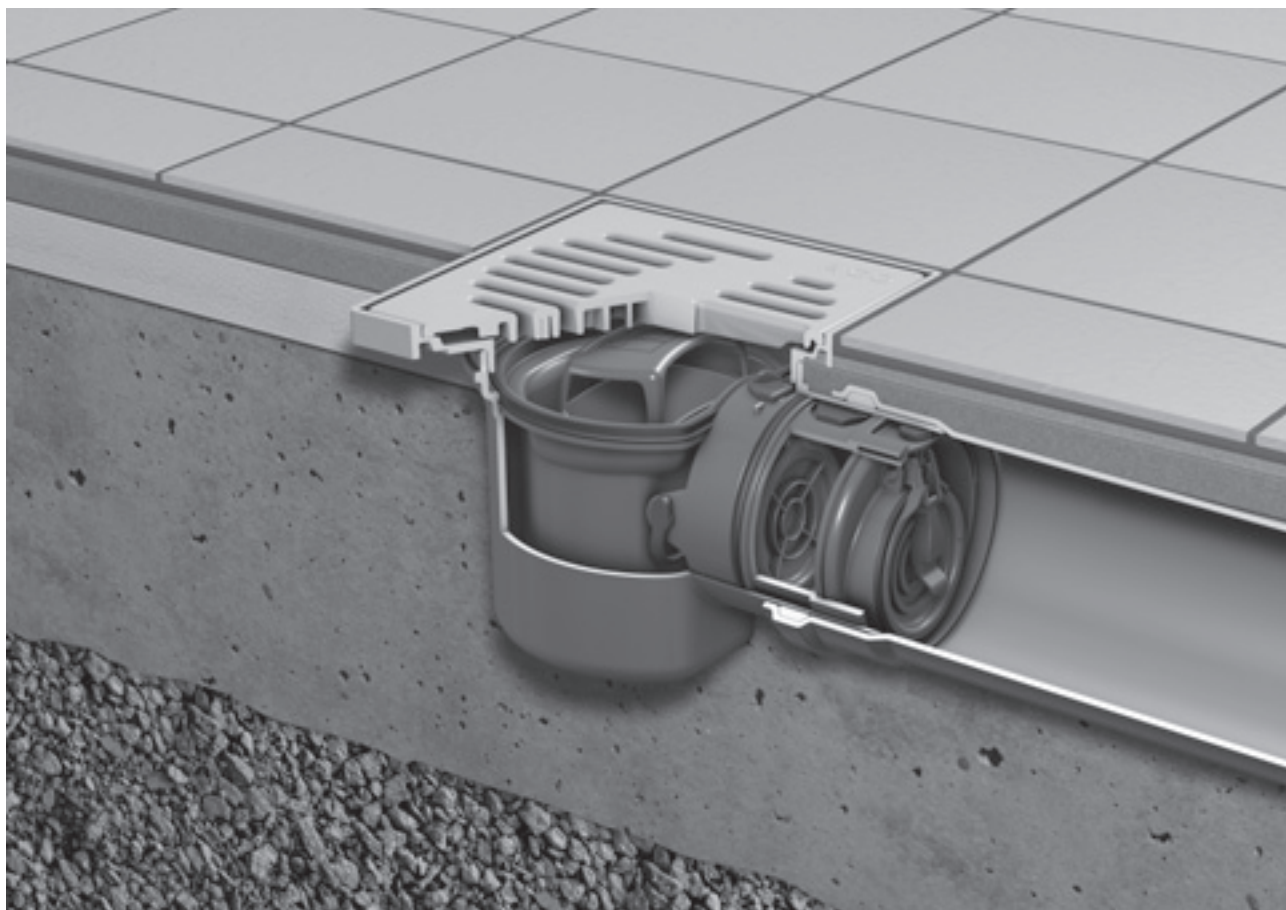
flap. This prevents wastewater from the sewers from flowing back into the building. The second flap is an extra safety feature to ensure that the backflow stop functions even when the first flap fails to close properly because of the presence of dirt, etc. The emergency seal integrated into the second flap provides additional security and can be operated manually. Note that when the emergency seal is locked in position, it also prevents wastewater generated in the building from flowing into the sewer! It is therefore very important that this emergency seal is reopened again immediately after returning to the building, e.g. after a holiday.

Product benefits

- Compact dimensions ideal for refurbishment
- No tools required to assemble and dismantle the sludge bucket and backflow device
- Rotatable top section for optimal adjustment to the tile pattern
- Extensions available for flexible adjustment to deeper installation positions



Installation example



ACO JUNIOR® cellar drain with backflow stop DN 100 Type 5 pursuant to EN 13564

Article description

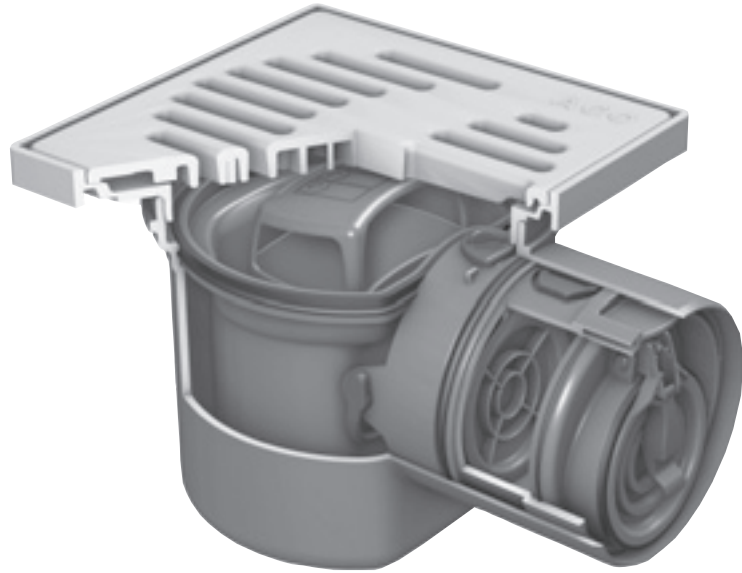
ACO JUNIOR® cellar drain with backflow stop, DN 100 Type 5 pursuant to EN 13564.

Made of plastic with removable sludge bucket and odour trap, 60 mm water trap. Shut off unit with two backflow flaps and a manually lockable emergency seal, top section made of plastic with frame dimensions 197 x 197 mm and grey grating class K3.

Outlet socket DN 100 with 1.5° socket slope for connection to plastic pipes pursuant to DIN 19534 and DIN 19537.

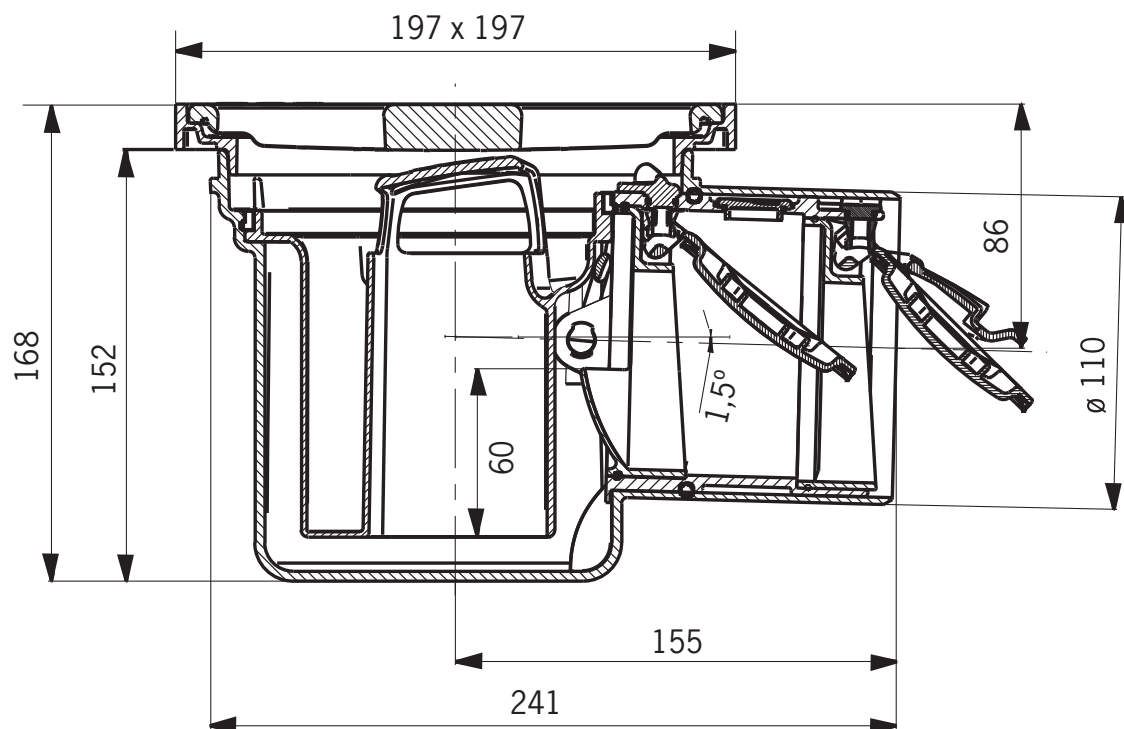
Drain performance: 1.6 l/s

Weight: approx. 1.2 kg



AP Socketed ipe 200 mm

Article	Article No.	DN
ACO JUNIOR®	2130.00.77	100
Inlet socket	2410.00.04	50
Extension	2040.00.06	
Height 130 mm		
ACO maintenance kit	2120.00.00	



ACO TRIPLEX-K-2 double backflow stop with shaft system

The ACO TRIPLEX-K-2 backflow stop is a Type 2 backflow safety valve pursuant to EN 15364. This product has been specially designed for installation in floor plates. The backflow stop can be equipped with a sealing flange against pressurised water. The ACO TRIPLEX-K-2 is specified for use with wastewater free of faeces.

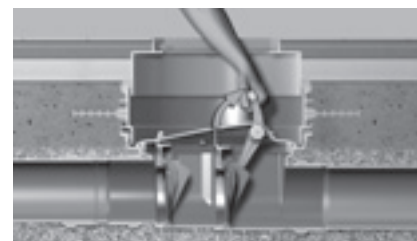
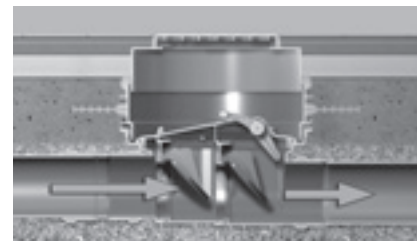
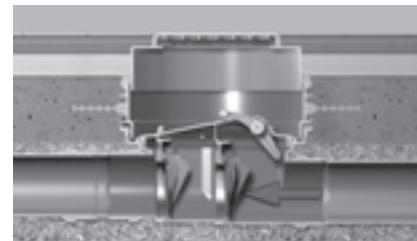
It must only be connected to drainage installations generating wastewater free of faeces, e.g. floor drains, showers or washing machines located below the backflow level. During normal operating conditions, the flaps hang loose. The force of flowing wastewater pushes open the flap in the flow direction to drain the wastewater in the direction of the sewer. If there is backflow, the wastewater backing up from the sewer flows against the normal flow direction and comes into contact with the outer backflow flap. This prevents wastewater from the sewers from flowing back into the building. The second flap is an extra safety feature to ensure that the backflow stop functions even when the first flap fails to close properly because of the presence of dirt, etc.

The ACO TRIPLEX-K-2 also has an emergency seal. This is integrated within the rear flap. This is an additional safety feature and is actuated manually. The emergency seal can be easily actuated without a great deal of force and is safely in position when a loud click is heard.

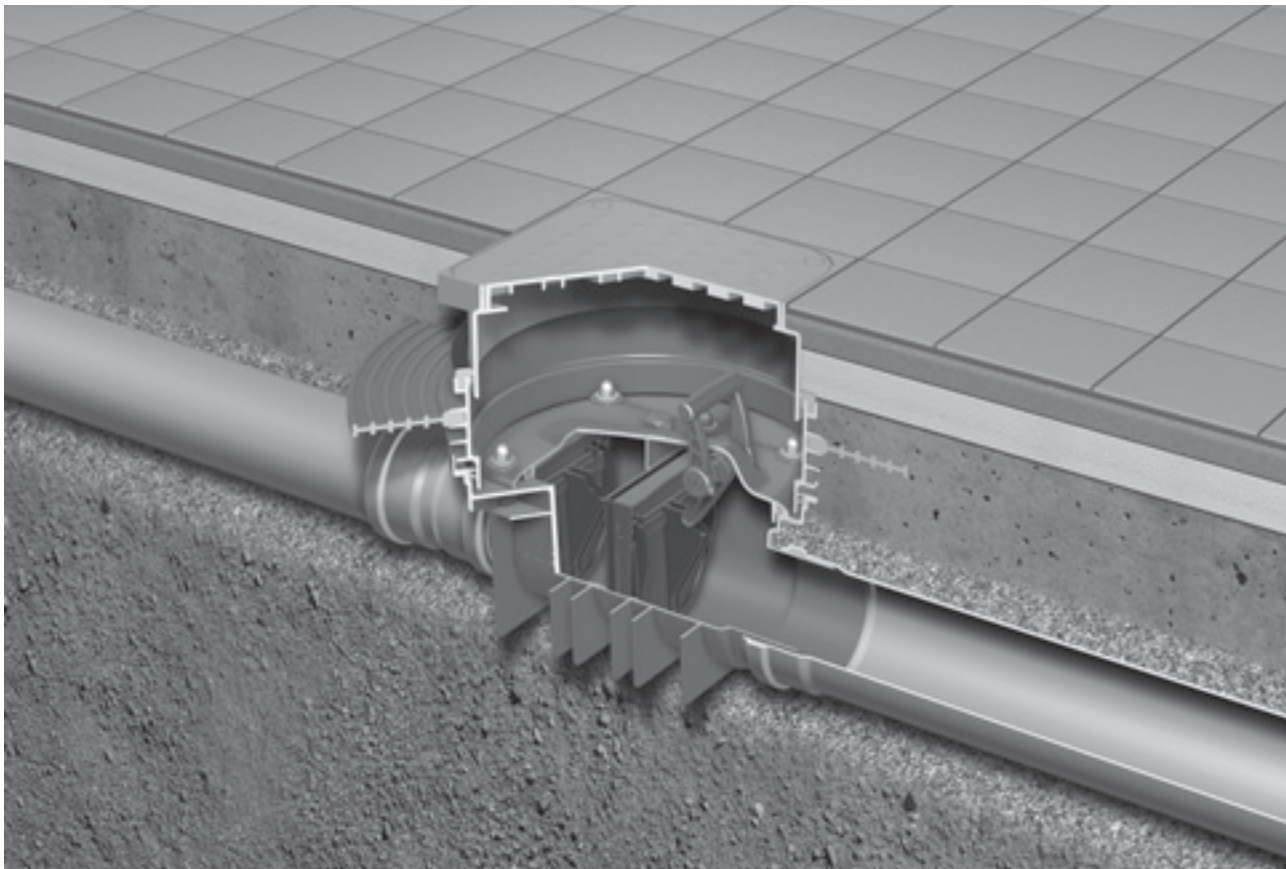
Note that when the emergency seal is locked in position, it also prevents wastewater generated in the building from flowing into the sewer! It is therefore very important that this emergency seal is reopened again immediately after returning to the building, e.g. after a holiday.

Product benefits

- Minimal intrinsic gradient 12 mm, and so optimal for refurbishment
- Height adjustable top section for perfect adaptation to floor level
- Optional step-wise height adjustable sealing flange for flexible adaptation to the sealing level
- Easily convertible to an automatic backflow stop for wastewater containing faeces



Installation example



ACO TRIPLEX-K-2 double backflow stop, DN 100 Type 2 pursuant to EN 13564 for installation within floor plates. Figure shows TRIPLEX-K-2 with optional sealing flange to protect the device against pressurised water.

Article description

ACO TRIPLEX®-K-2 double backflow stop.
Type 2 pursuant to EN 13564 for installation in floor plates.

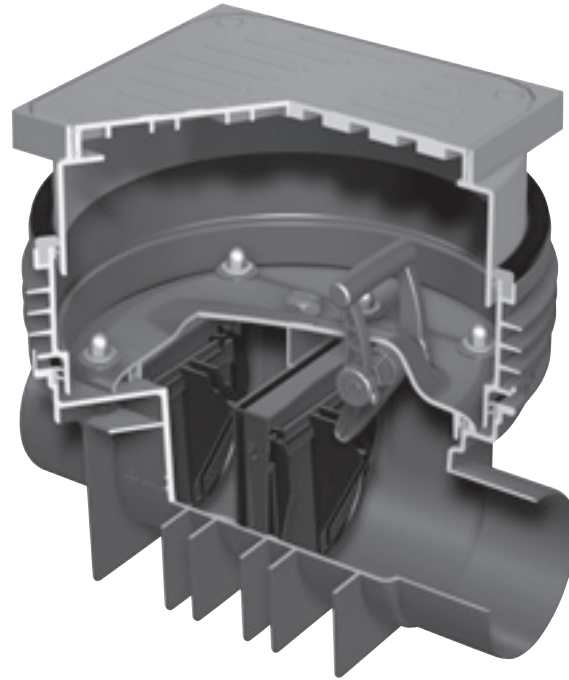
With telescopic, adjustable top section and cover plate K3.

Retrofittable with adjustable flange to seal against pressurised water.

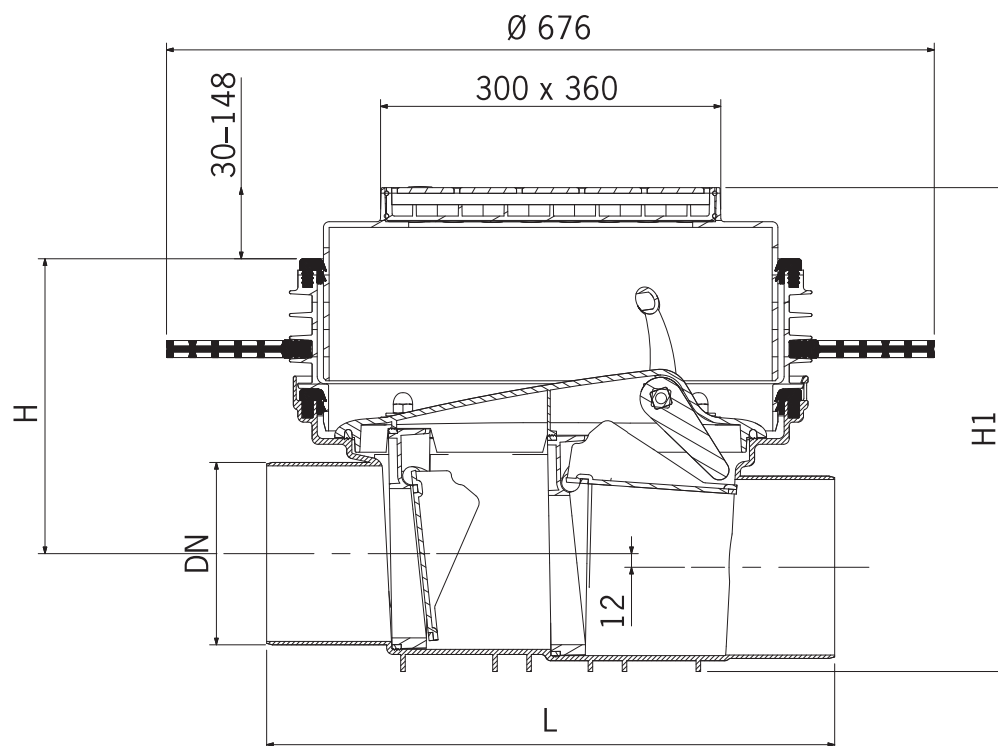
For wastewater free of faeces (grey water), for installation in pipe systems, gradient 12 mm, with two automatically closing backflow flaps, with integrated emergency seal.

Safe manual locking with audible click signal when locked, with cleaning and maintenance opening and inspection pipe. Convertible to automatic Type 3F backflow stop for use with wastewater containing faeces pursuant to DIN EN 13564.

Weight 6.5 kg



Article No.	DN	Ø (mm)	L (mm)	H (mm)	H1 (mm)
620366	100	110	460	297	393-512
620367	150	160	500	272	393-512



ACO TRIPLEX-K-2 double backflow stop

The ACO TRIPLEX-K-2 double backflow stop corresponds to Type 2 EN 13564. This product is specially designed for installation in an unenclosed wastewater pipe. This backflow stop is naturally also suitable for subsequent installation in existing shafts thanks to its compact dimensions.

This backflow stop is specified for use with wastewater free of faeces.

It must only be connected to drainage installations generating wastewater free of faeces, e.g. floor drains, showers or washing machines located below the backflow level. During normal operating conditions, the flaps hang loose. The force of flowing wastewater pushes open the flap in the flow direction to drain the wastewater in the direction of the sewer. If there is backflow, the wastewater backing up from the sewer flows against the normal flow direction and comes into contact with the outer backflow flap. This prevents wastewater from the sewers from flowing back into the building. The second flap is an extra safety feature to ensure that the backflow stop functions even when the first flap fails to close prop-

erly because of the presence of dirt, etc.

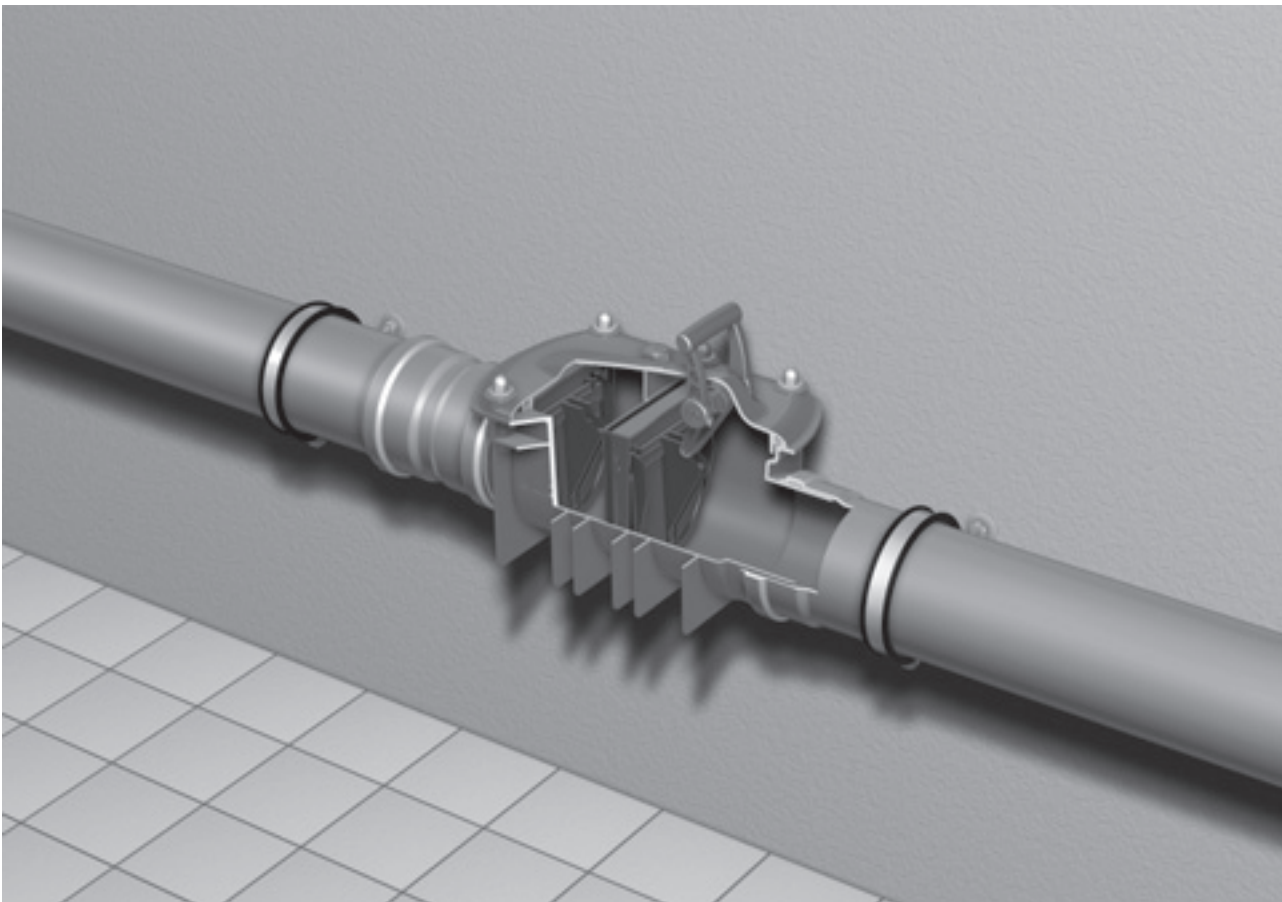
The ACO TRIPLEX-K-2 also has an emergency seal. This is integrated within the rear flap. This is an additional safety feature and is actuated manually. The emergency seal can be easily actuated without a great deal of force and is safely in position when a loud click is heard.

Note that when the emergency seal is locked in position, it also prevents wastewater generated in the building from flowing into the sewer! It is therefore very important that this emergency seal is reopened again immediately after returning to the building, e.g. after a holiday.

Product benefits

- Minimal intrinsic gradient 12 mm, and so optimal for refurbishment
- Easily convertible to an automatic backflow stop for wastewater containing faeces

Installation example



ACO TRIPLEX-K-2 double backflow stop, DN 100 Type 2 pursuant to EN 13564 for installation in unenclosed pipes

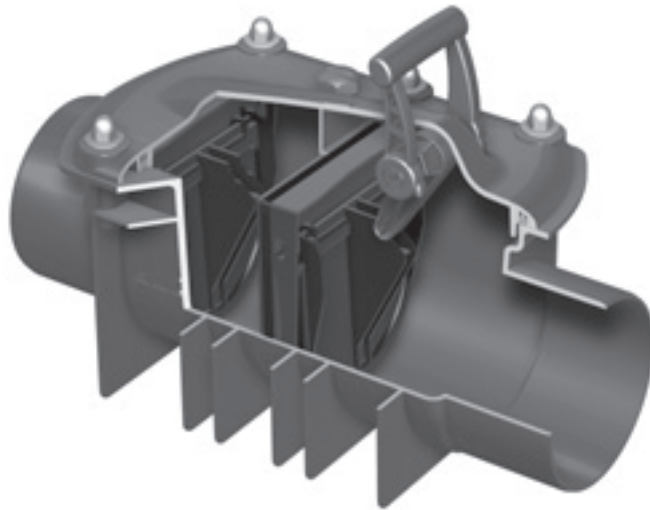
Article description

ACO TRIPLEX-K-2 double backflow stop.
Type 2 pursuant to EN 13564 for installation in unenclosed drainpipes.

For wastewater free of faeces (grey water), for installation in pipe systems, gradient 12 mm, with two automatically closing back-flow flaps, with integrated emergency seal.

Safe manual locking with audible click signal when locked, with cleaning and maintenance opening and inspection pipe. Convertible to automatic Type 3F backflow stop for use with wastewater containing faeces pursuant to EN 13564.

Weight 3,5 kg



Article No.	DN	Ø (mm)	L (mm)	H (mm)
620364	100	110	460	338
620365	150	160	500	338

