



## SHOWER CHANNELS

*Practical and attractive go well together. The Shower channel is an easy to install and aesthetically attractive discharge channel for shower locations. Because of the shallow depth and varying lengths the shower channel is suitable for use in new or refurbished projects. As the discharge from the shower channel is just one way, this makes the tile work easier. Should the shower channel be installed at the front of the shower it will function as a barrier against ingress of water whilst maintaining a threshold free access. Should the channel be installed with a dividable grating, this can then be placed under the showerdoor.*

Practical and attractive go well together. The shower channel is an easy to install and aesthetically attractive discharge channel for shower locations.

Shower channel is suitable for use in new or refurbished projects, because of the shallow depth and varying lengths.

As the discharge from the shower channel is just one way, this makes the tile work easier.

If the shower channel is installed at the front of the shower it will function as a barrier against ingress of water whilst maintaining a threshold free access.

If the channel is installed with a dividable grating then this can be placed under the shower door.

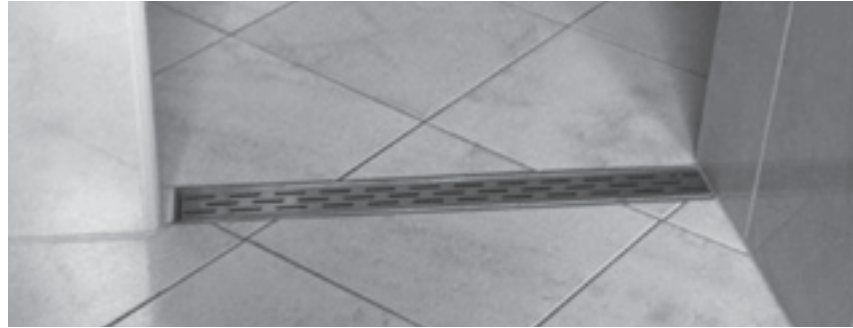
#### Shower Channel Advantages

- Aesthetically attractive
- Less tile cutting
- Simplified outlets
- Easy to maintain
- Low installation costs
- Removable foul air trap

#### Executive Line

##### Characteristics:

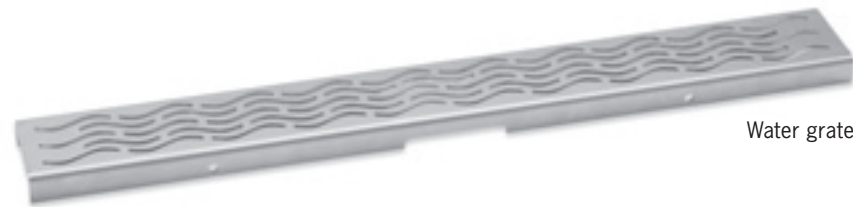
- Cross grade for a better water drain
- Polished surface
- Special foul air trap (P-trap)
- Self cleaning
- Flow rate up to 1 l/sec.
- Telescopic and 360° rotatable trap
- Available with different gratings
- Flange for isolation
- Adjusting screws for easy installation
- Silt basket
- Low installation depth



Shower channel Installation



Part grating section



Water grate



Square grate



Slot grate



P-trap

## Installation instructions

### Where is it possible to use the ACO shower channel?

The shower channel can be installed in newly constructed buildings as well as renovation projects. It is necessary to prepare sufficient space in the floor for the body of the shower channel and the waste pipe. Shower channels are available in various standard lengths so that it is possible to select the most suitable product for a given application. Channels are available in designs with sectioned gratings to facilitate installation under shower doors.

### Necessary materials

- Self-adhesive tape;
- Spirit level;
- Emery paper;
- Degreasing agent;
- Silicone sealant

### Important

1. The off-take capacity of the channel is not only determined by the capacity of the actual channel itself, but also the waste pipe to which these elements are to be connected.

#### Please adhere to the following instructions:

- The length of the waste pipeline to the vertical waste stack of the system must be as short as possible;
- Avoid bends in the system where possible;
- Make sure that the waste pipe has a sufficient gradient for the discharge required;
- The diameter of the waste pipeline must be at least 50 mm (or 40 mm by plastic FAT).

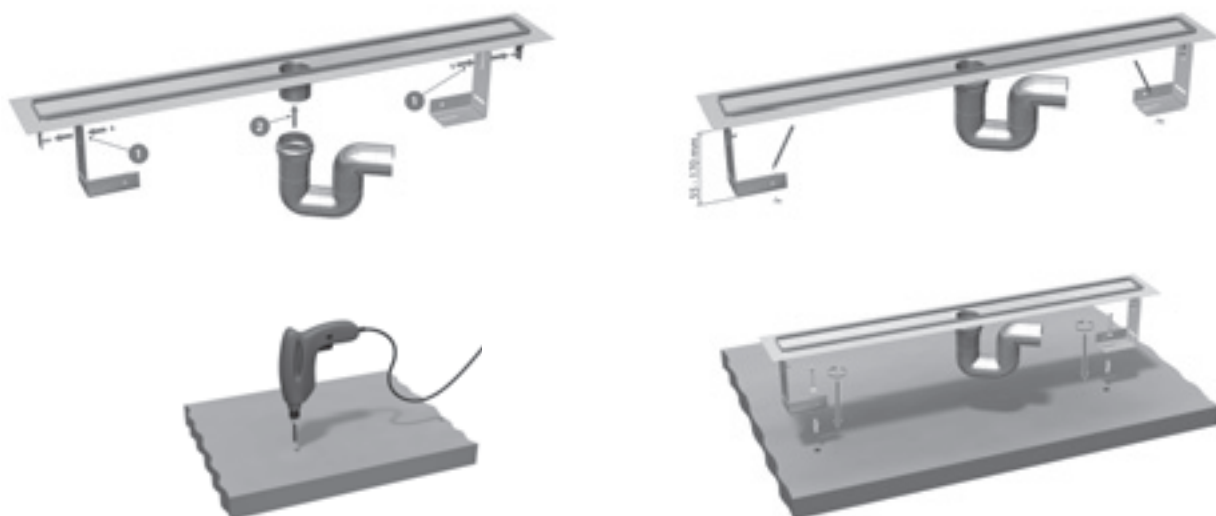
2. The capacity of the shower channel is approximately 20 l/min (tested according to EN1253), which is more than sufficient for a majority of shower types. If the shower channel is used for multiple showers or for showers with a higher capacity please contact your supplier.
3. Select a shower channel length so that it can be placed between the walls without any additional tiles. The shower channel can be placed both in the rear of the shower area or to the front, the former option tends to be preferred.
4. If the shower channel is installed under the shower door, it is necessary to use of the shower channel with a sectioned grating so that removal is possible.
6. Level the channel with the help of the extension brackets (fasten these brackets with screws) or install the channel in mortar.
7. Fill in the space under the channel and around it with cement mortar, taking into account the thickness of the tiles.
8. While laying the tiles, it is necessary to make sure that the gradient in the shower area is always directed towards the shower channel. Place the tiles at least 1 to 2 mm higher than the upper side of the shower channel edge, in order to avoid pooling along the channel.
9. After tiling, seal the tiles to the channel with a silicon sealant, complying with the recommendations of the manufacturer. For best results, make sure the silicon joint has the same width and colour as the joint between the tiles.

### Assembly

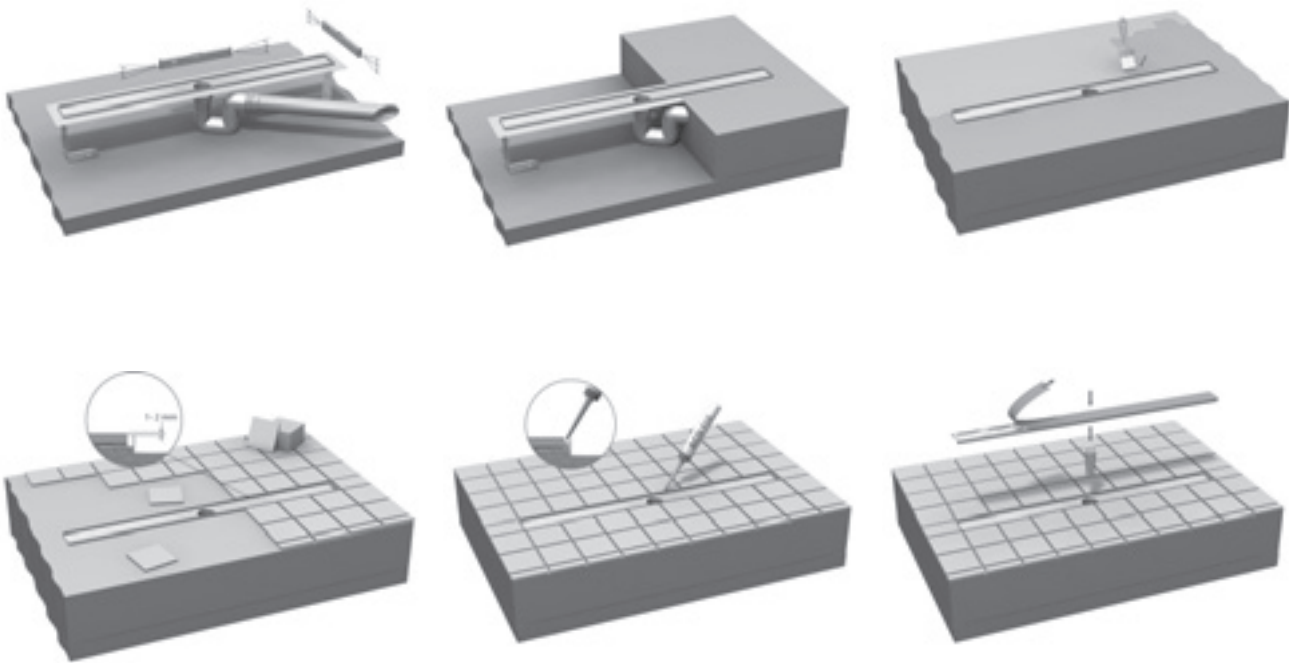
1. Before installing the shower channel, please remove the gratings in order to avoid damage. Further protection is afforded by applying adhesive tape to the edge of the shower channel.
2. Make sure that no impurities (mortar, etc.) can get into the shower channel during assembly and installation work. We recommend that it is temporarily covered during these processes.
3. We recommend to use the emery paper to roughen the side and bottom sections of the shower channel, then use degreasing agent to achieve better adhesion to the floor materials.
4. Connect the channel to the waste pipe making sure that the pipe is inserted as far as possible (regardless of the pipe type – whether PVC, PE or PP).
5. If required ground the channel by connecting the grounding conductor to the grounding point of the drainage body.
10. Remove any cement or jointing agent residue carefully with the help of a plastic wool/sponge.
11. Remove the protective film from the grating then install the grating back into the channel.

### Cleaning and maintenance

Stainless steel is vulnerable to scratches. When cleaning, do not use sharp or abrasive materials. Use common household detergents for bathrooms or specialist cleaning agents for stainless steel. The shower channel does not require any special maintenance, but we recommend that you remove regularly the foul air trap to check the drainage body for contamination and to remove any possible impurities.

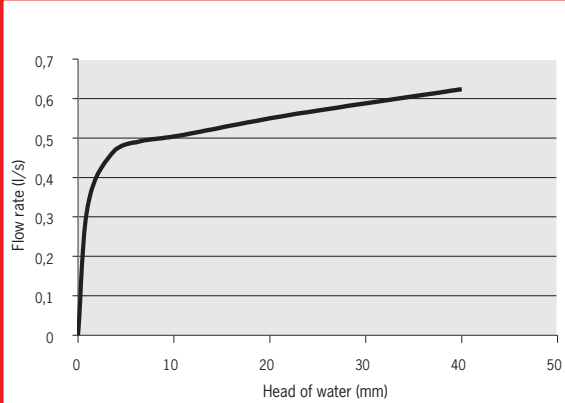


## Installation instructions

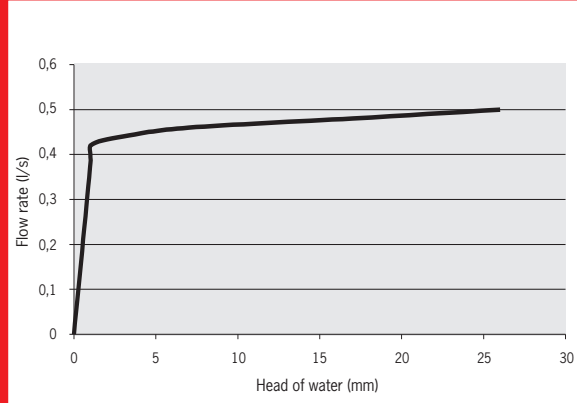


## Flow rates

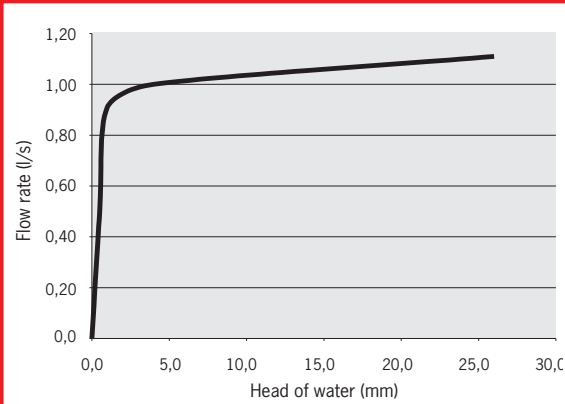
*Comfort Line*



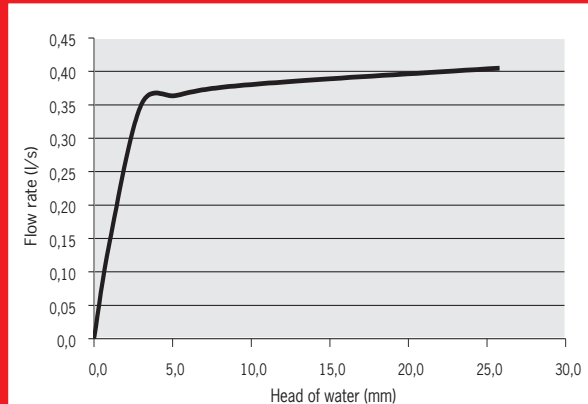
*Comfort Line decrease version*



*Exclusive Line*



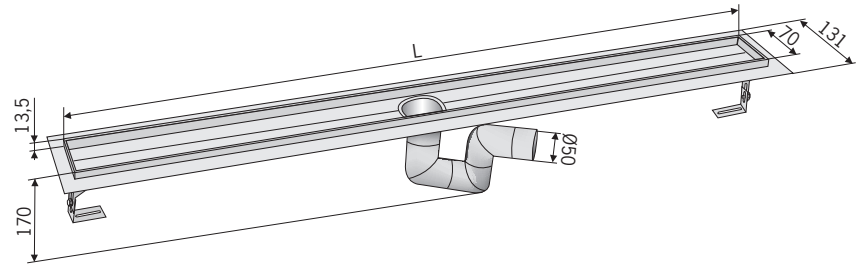
*Shower Line*



## Executive Line

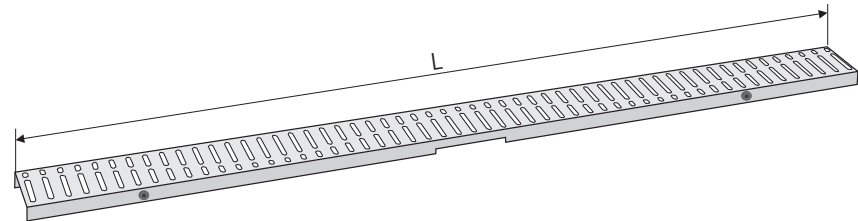
### Shower channels with P-trap

Length	Shower channel
L (mm)	with P-trap, without grate
485	405766
585	405767
685	405768
785	405769
885	405770
985	405771
1085	405772
1185	405773

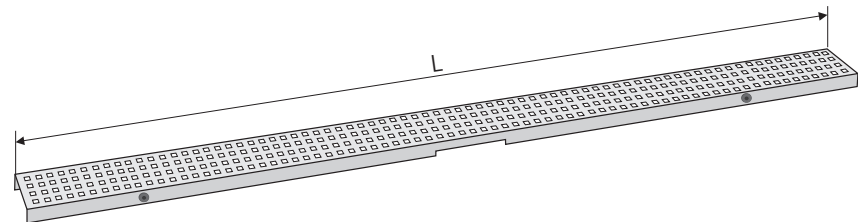


### Gratings

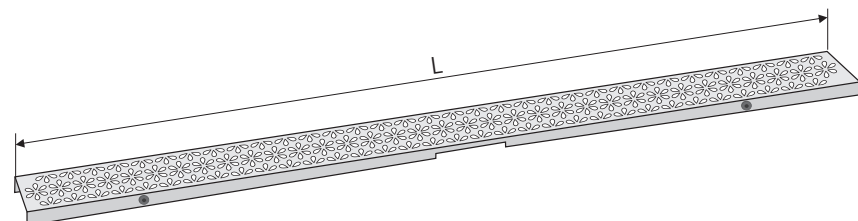
Length	Shower channel
L (mm)	wave grate
478	405806
578	405807
678	405808
778	405809
878	405810
978	405811
1078	405812
1178	405813



Length	Shower channel
L (mm)	square grate
478	405790
578	405791
678	405792
778	405793
878	405794
978	405795
1078	405796
1178	405797



Length	Shower channel
L (mm)	flower grate
478	405798
578	405799
678	405800
778	405801
878	405802
978	405803
1078	405804
1178	405805

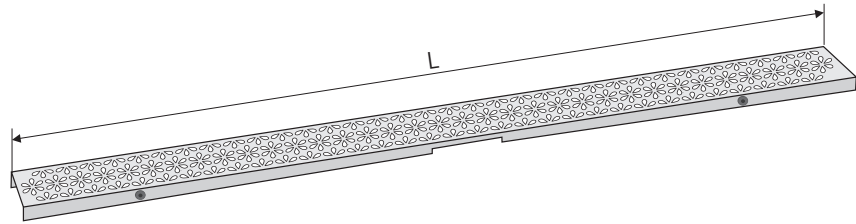


All materials are 304 stainless steel

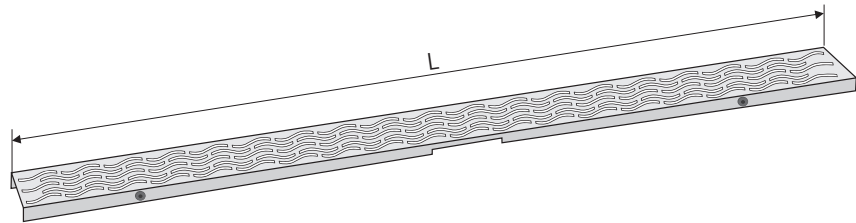
## Executive Line

### Gratings

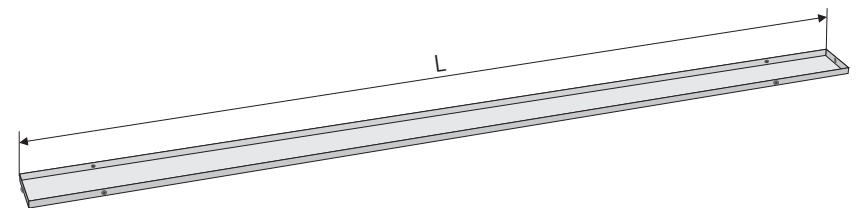
<i>Length</i>	<i>Shower channel</i>
L (mm)	flower grate
478	405782
578	405783
678	405784
778	405785
878	405786
978	405787
1078	405788
1178	405789



<i>Length</i>	<i>Shower channel</i>
L (mm)	water grate
478	405774
578	405775
678	405776
778	405777
878	405778
978	405779
1078	405780
1178	405781



<i>Length</i>	<i>Shower channel</i>
L (mm)	cover for tiles
478	406062
578	406063
678	406064
778	406065
878	406066
978	406067
1078	406068
1178	406069



## Comfort Line

### Standard FAT, Channel without flange

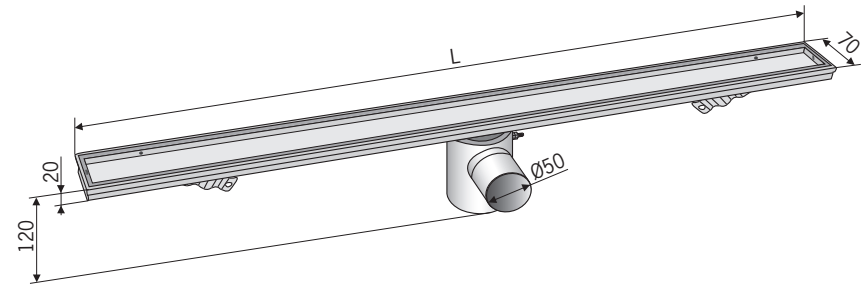
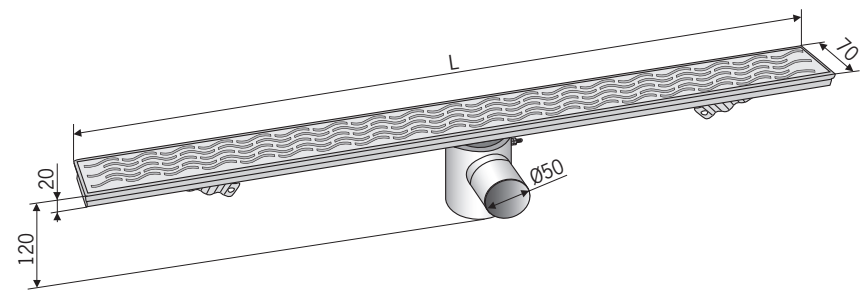
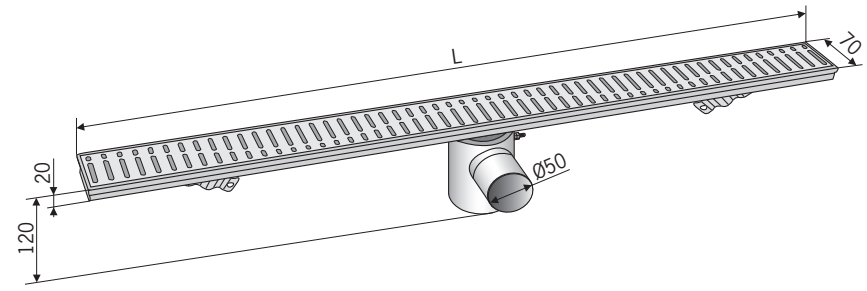
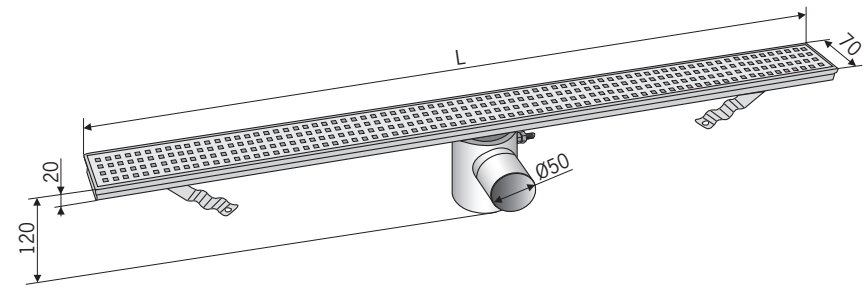
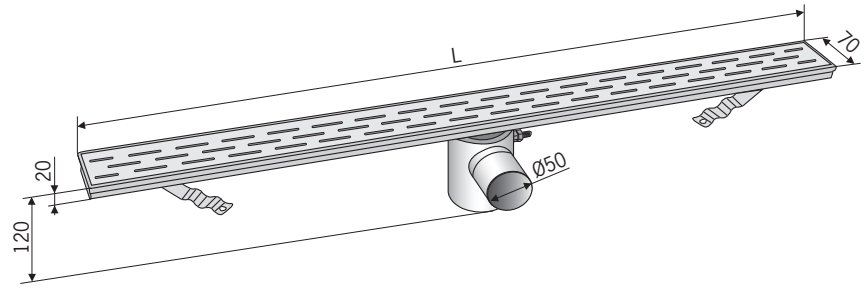
Length	Channel with slot grate	
L (mm)	1 grate	3 grates
485	402738	403780
585	402739	403781
685	402740	403782
785	402741	403783
885	402742	403784
985	402743	403785
1085	402744	403786
1185	402745	403787

Length	Channel with square grate	
L (mm)	1 grate	3 grates
485	404507	404515
585	404508	404516
685	404509	404517
785	404510	404518
885	404511	404519
985	404512	404520
1085	404513	404521
1185	404514	404522

Length	Channel
L (mm)	with wave grate
485	406180
585	406181
685	406182
785	406183
885	406184
985	406185
1085	406186
1185	406187

Length	Channel
L (mm)	with water grate
485	406459
585	406460
685	406461
785	406462
885	406463
985	406464
1085	406465
1185	406466

Length	Channel
L (mm)	with cover for tiles
485	406136
585	406137
685	406138
785	406139
885	406140
985	406141
1085	406142
1185	406143



All materials are 304 stainless steel

STAINLESS STEEL CHANNELS

INDUSTRIAL GULLIES

SHOWER CHANNELS

SANITARY RANGE

PLASTIC FLOOR GULLIES

BALCONY AND TERRACE DRAINS

STAINLESS STEEL PIPES

ACCESS COVERS

BACK FLOW PREVENTERS

GREASE SEPARATORS FREE STANDING/GROUND INSTAL.

BIOLOGICAL GREASE TRAPS

STAINLESS STEEL INFORMATION

## Comfort Line

### Decrease FAT, Channel without flange

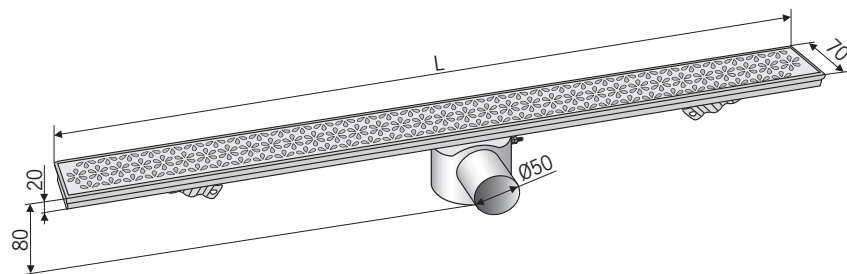
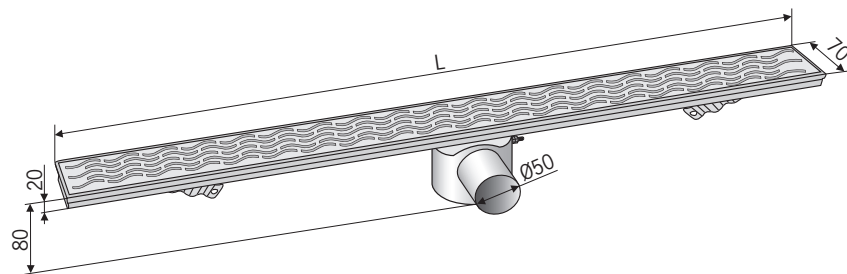
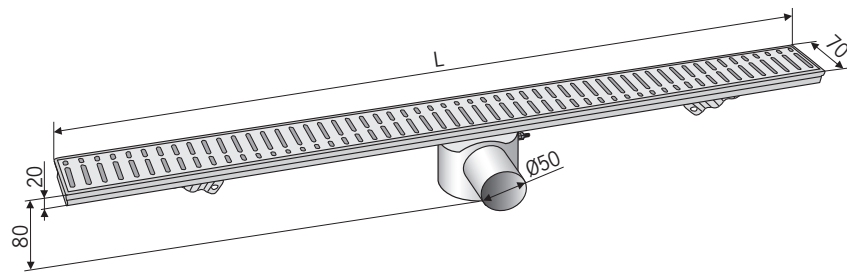
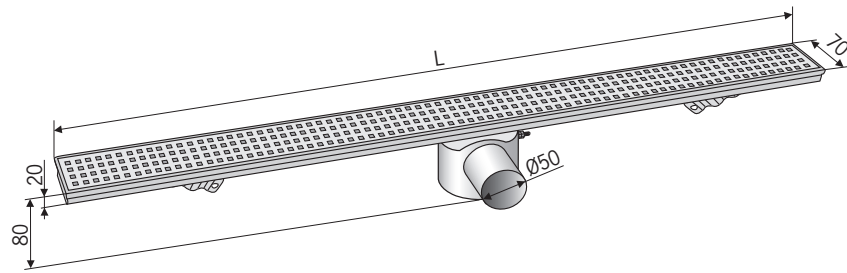
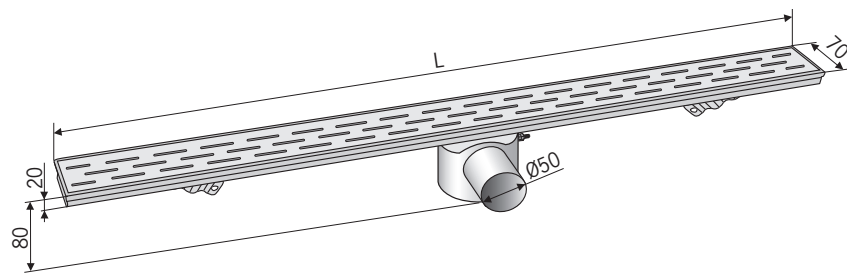
Length	Channel with slot grate	
L (mm)	1 grate	3 grates
485	405750	405742
585	405751	405743
685	405752	405744
785	405753	405745
885	405754	405746
985	405755	405747
1085	405756	405748
1185	405757	405749

Length	Channel
L (mm)	with square grate
485	406467
585	406468
685	406469
785	406470
885	406471
985	406472
1085	406473
1185	406474

Length	Channel
L (mm)	with wave grate
485	406172
585	406173
685	406174
785	406175
885	406176
985	406177
1085	406178
1185	406179

Length	Channel
L (mm)	with water grate
485	406298
585	406299
685	406300
785	406301
885	406302
985	406303
1085	406304
1185	406305

Length	Channel
L (mm)	with flower grate
485	406290
585	406291
685	406292
785	406293
885	406294
985	406295
1085	406296
1185	406297



All materials are 304 stainless steel

## Shower Line

### Two designs:

- Stainless steel grate, ABS plastic channel and foul air trap
- Stainless steel channel and grate, ABS plastic foul air trap

### Material characteristics:

- ABS (acrylonitrile-butadiene-styrene) is a technical plastic material, used widely nowadays due to its ideal properties such as high tenacity, good shape stability throughout a wide temperature range, advanced hardness and scratch resistance.
- AISI 304 (DIN 1.4301) austenitic stainless steel has an excellent corrosion resistance. Stainless steel products are widely used in all areas with high requirements on hygiene and good appearance.



Foul air trap with basket

### Product characteristics:

#### Stainless steel grate:

- Made of AISI 304 material
- Various designs available
- 3 part design for installation under the door
- Rubber distance plugs prevent spontaneous protrusion resulting in a loud clicking whilst walked upon

#### ABS channel:

- Made of ABS
- Special surface treatment for anchorage in the floor
- Linear down grade
- 3 different lengths available

#### Stainless steel channels:

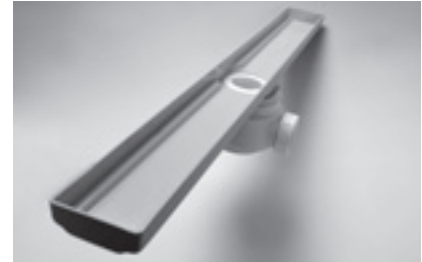
- Material AISI 304
- Designed for more demanding customers

#### Foul air trap:

- Material ABS
- Made in accordance with EN 1253
- High outflow up to 0.5 l/sec
- Includes basket for catchment of hair and other impurities
- Drain water pipe connection to DN40



Foul air trap



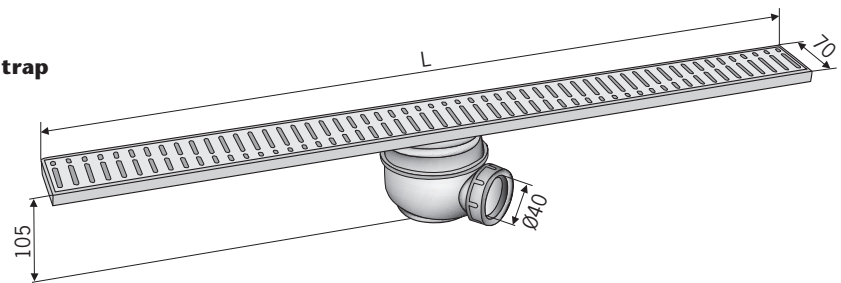
Linear down grade



Rubber distance plug

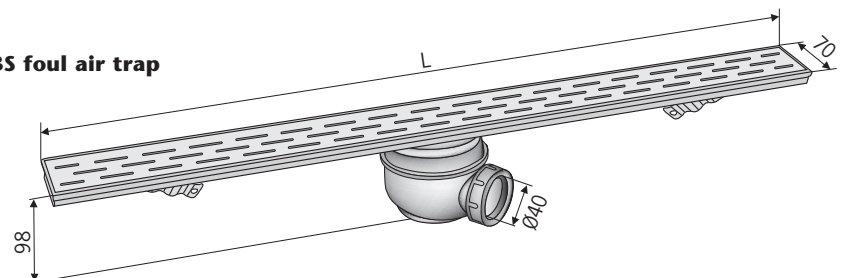
### Shower channel ABS with ABS foul air trap

Length L (mm)	1 wave grate	1 grate with long holes	3 grates with long holes
689	405724	405718	405721
789	405725	405719	405722
889	405726	405720	405723



### Stainless steel shower channel with ABS foul air trap

Length L (mm)	1 wave grate	1 grate with long holes	3 grates with long holes
685	405735	405729	405732
785	405736	405730	405733
885	405737	405731	405734



## ACO Shower channels – round version

- Unique round design
- High-end solution

### Description

Outside radius = 540 mm

Leg length = 550 mm

Channel width = 84 mm

With revolving flange for alternatively sealing, with 3 sockets DN50 suitable for all spigot pipe systems.

Channel and grating with surface electropolished with removable odour seal.



**New**

Entrance	Channel with grate	Part. No.
<i>left</i>	Raindrops	9010.55.03
<i>left</i>	Quadrato	9010.55.04
<i>left</i>	Flag	9010.55.06
<i>left</i>	Tile	9010.55.07
<i>right</i>	Raindrops	9010.55.13
<i>right</i>	Quadrato	9010.55.14
<i>right</i>	Flag	9010.55.16
<i>right</i>	Tile	9010.55.17



Raindrops



Quadrato



Flag



Tile \*

\* picture with sample of pavement