

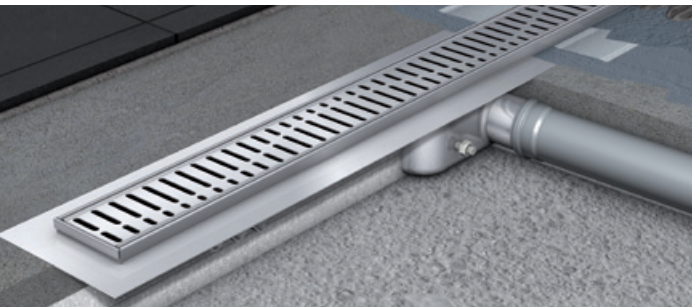


ACO ShowerDrain C-line – functional design

The ShowerDrain C series is characterised by modern design and perfect functionality. The basic is the high quality stainless steel which is used for the production of the shower channel itself, gully and grating.

The foul air trap is made out of polypropylene. The steel parts are pasivated; the gratings are brushed to the silk gloss.

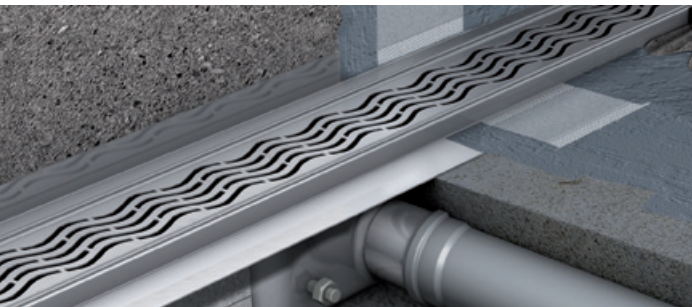
From the user's point of view the ACO ShowerDrain C excelled especially by the high flow rate, very low construction height and very easy maintenance.



■ **The linear solution with horizontal flange**

The ACO ShowerDrain C shower channel for sealing without contact to walls

Page 34



■ **The linear solution with vertical flange**

The ACO ShowerDrain C shower channel with vertical flange for rear wall connection

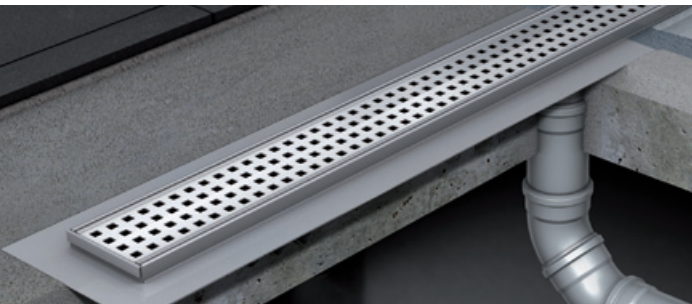
Page 36



■ **The linear solution without flange**

The ACO ShowerDrain C shower channel for installation with sealing under the channel and gully

Page 38



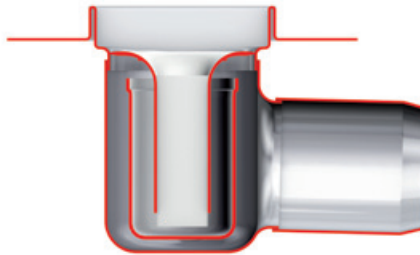
■ **The linear solution without foul air trap**

The ACO ShowerDrain C shower channel for minimum construction height with vertical outlet and without foul air trap

Page 40

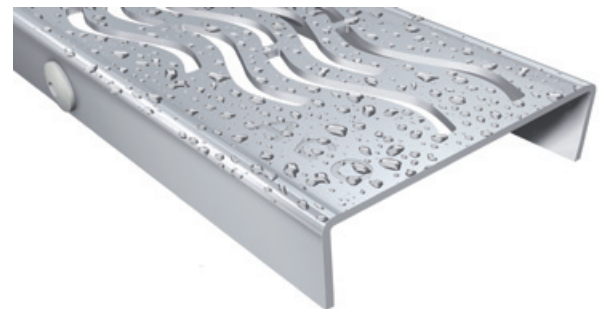
Low construction height

The standard model of ACO ShowerDrain C (50 mm of water column in the foul air trap) has a construction height only 92 mm. The lowered model (30 mm of water column in the foul air trap) has incredible construction height of only 65 mm. If integrated foul air trap not needed, it is possible to install ACO ShowerDrain C only with the spigot. In this case, the construction height is equal to the height of the channel – only 18 mm. These values enable very wide application of ACO ShowerDrain C in the modern new buildings and buildings under reconstruction.



Easy maintenance

The user's comfort is increased by the efficiency of the foul air trap and its easy cleaning. Syphon (foul air trap) is made out of plastics. The reliable seal is injection-moulded together with the foul air trap. Due to this construction, there is no risk of losing of the sealing, or another malfunction. The foul air trap can be easily removed from the shower channel. It is easy to disassemble it into two separate parts and clean it by hand or in a dish washer.



All the ShowerDrain C gratings are silk gloss gratings. The silk gloss gives a smooth surface with a semi gloss finish. The ShowerDrain C gratings are therefore easy to maintain as water and soap residues can be easily removed.

Versions of ACO ShowerDrain C

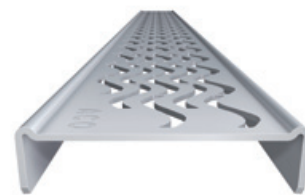
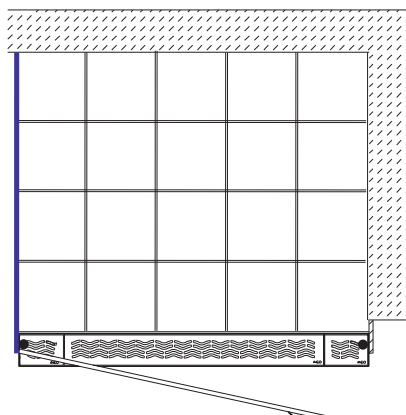
The shower drain is made in width of 70 mm, in seven lengths – 585 mm, 685 mm, 785 mm, 885 mm, 985 mm, 1085 mm and 1185 mm.

- with standard and lowered height
- with or without vertical or horizontal flange
- with or without foul air trap

The offer consists of five elegant stainless steel grates in version of one or three parts. The three parts grates are specified for the installation under the door. The grates have a perfect surface finishing. They are treated by pasivation and brushed to the silk gloss.

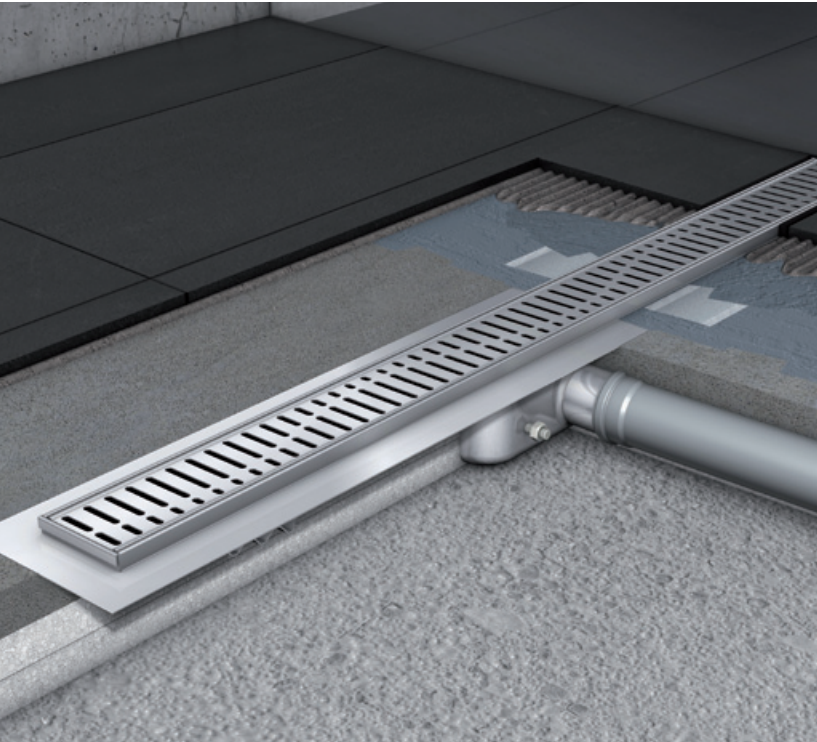
Gratings in three parts

When is the shower channel located at the shower door, the channel has limited access because of the shower door hinge/frame part. For this application, some of the ACO ShowerDrain C can be supplied with a 3-piece grating. This enables installation of the channel under the door, whilst it is still possible to remove (the middle part of) the grating for cleaning.



The stainless steel ShowerDrain C gratings have an unique shape in which the middle part of the grating is lower than the edges. This reduces the risk of overshooting of water significantly.

The linear solution with horizontal flange

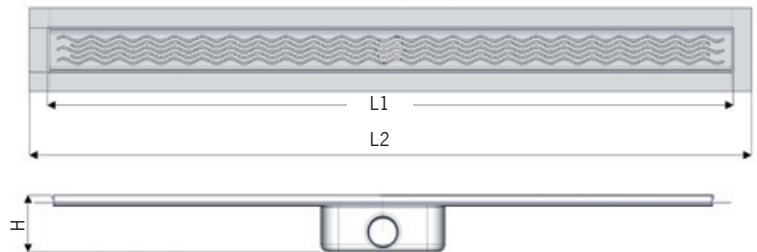


Article description

- drainage channel DN 50 for the shower area, suitable for all push-fit pipe socket systems
- installation height: 92 mm (50 mm FAT) or 65 mm (30 mm FAT)
- stainless steel channel and grating
- tested according to DIN EN 1253: flow rate 0.95 l/s, flow rate at entrance of shower: 0.5 l/s, flow rate against the wall: 0.8 l/s
- channel width: 70 mm
- channel body with lateral slope
- removable foul air trap seal of polypropylene
- brushed silk gloss gratings
- surrounding, integral thin bed flange

Product advantages

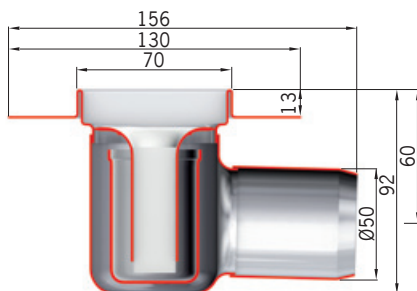
- welded stainless steel body, no risk of leakage
- low construction height very suitable for renovation
- easy removed and cleaned foul air trap, full access to the outlet pipe
- unique profile of gratings reduces overshooting of water (Patent pending)



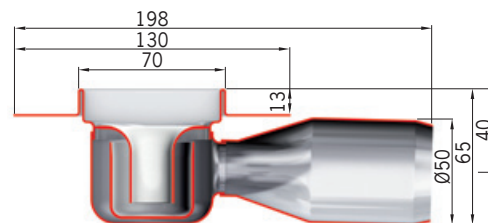
H = 92 mm with standard FAT (foul air trap height 50 mm)
 H = 65 mm with lower FAT (foul air trap height 30 mm)

Installation dimensions

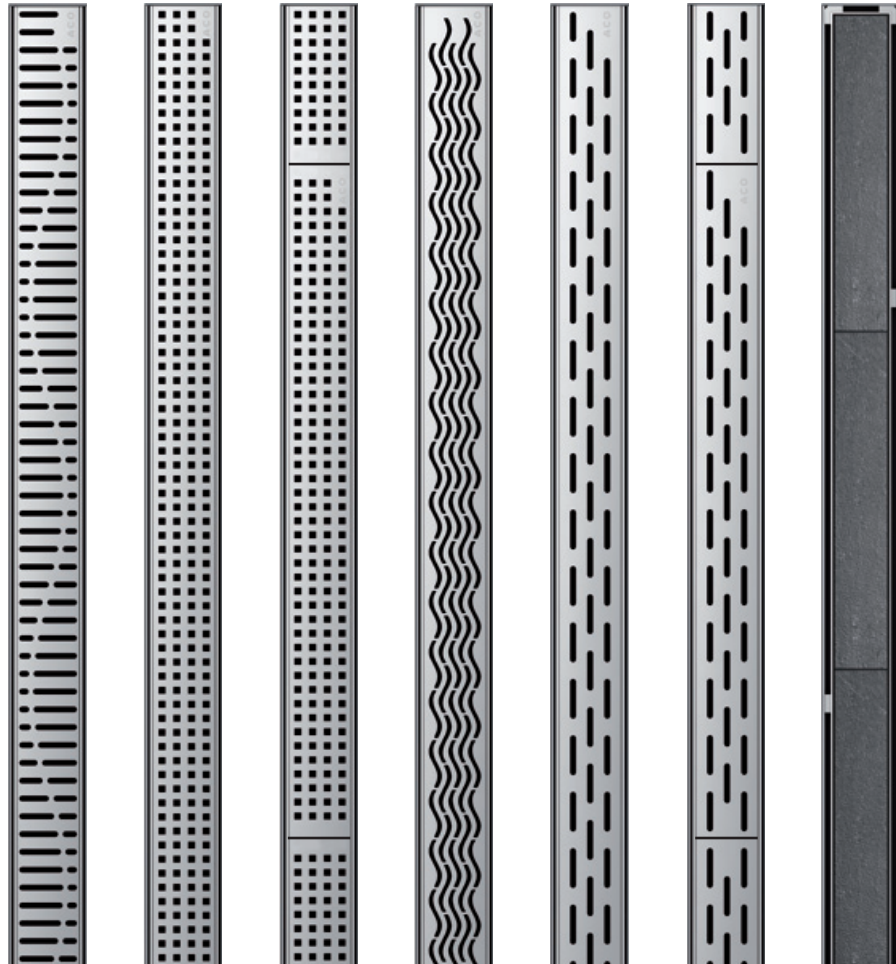
L1 (mm)	585	685	785	885	985	1085	1185
L2 (mm)	645	745	845	945	1045	1145	1245



Installation with thin bed flange



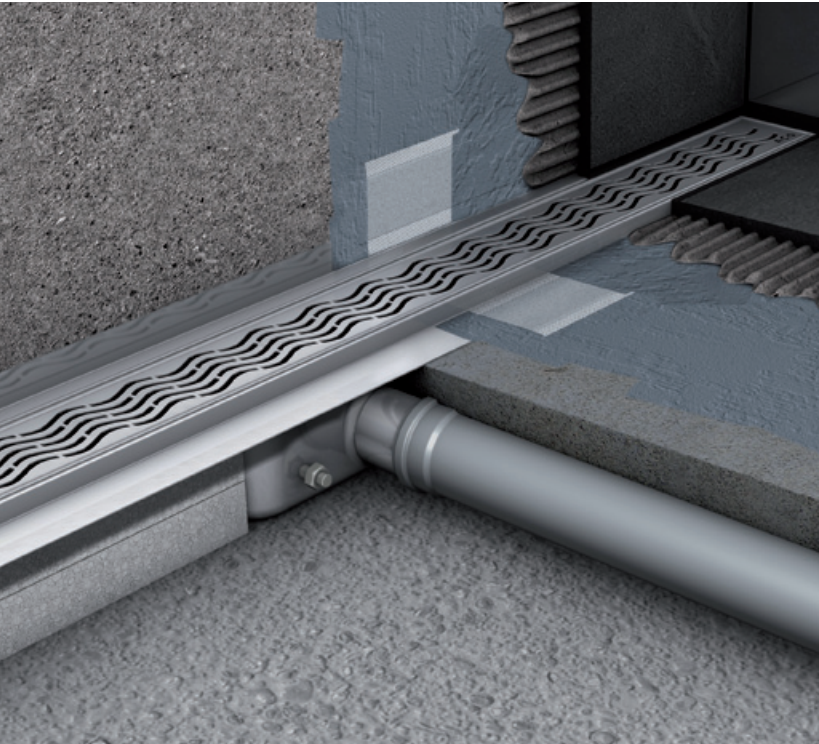
Low installation with thin bed flange



**Order data –
Channel with grating**

Length L1 (mm)	Height H (mm)	Grating						Tile, height max.: 10 mm
		Wave	Square one part	Square three part	Water	Slot one part	Slot three part	
585	92	404484	404492	404500	406452	403798	403806	408651
	65	406954	406275	407694	406283	406204	407701	408672
685	92	404485	404493	404501	406453	403799	403807	408652
	65	406955	406276	407695	406284	406205	407702	408673
785	92	404486	404494	404502	406454	403800	403808	408653
	65	406956	406277	407696	406285	406206	407703	408674
885	92	404487	404495	404503	406455	403801	403809	408654
	65	406957	406278	407697	406286	406207	407704	408675
985	92	404488	404496	404504	406456	403802	403810	408655
	65	406958	406279	407698	406287	406208	407705	408676
1085	92	404489	404497	404505	406457	403803	403811	408656
	65	406959	406280	407699	406288	406209	407706	408677
1185	92	404490	404498	404506	406458	403804	403812	408657
	65	406960	406281	407700	406289	406210	407707	408678

The linear solution with vertical flange

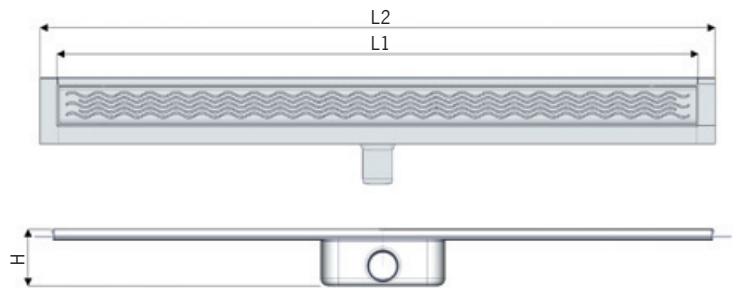


Article description

- drainage channel DN 50 for the shower area, suitable for all push-fit pipe socket systems
- installation height: 92 mm (50 mm FAT) or 65 mm (30 mm FAT)
- stainless steel channel and grating
- tested according to DIN EN 1253: flow rate 0.95 l/s, flow rate at entrance of shower: 0.5 l/s, flow rate against the wall: 0.8 l/s
- channel width: 70 mm
- channel body with lateral slope
- removable foul air trap of polypropylene
- brushed silk gloss gratings
- surrounding, integral thin bed flange, vertical flange on rear

Product advantages

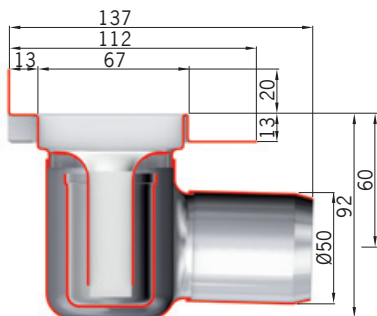
- welded stainless steel body, no risk of leakage
- low construction height very suitable for renovation
- easy removed and cleaned foul air trap, full access to the outlet pipe
- unique profile of gratings reduces overshooting of water (Patent pending)
- vertical flange provides additional safety against leakage problems at the sensitive wall-to-floor joint



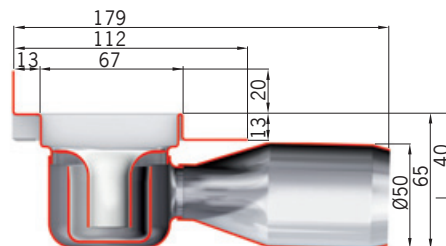
H = 92 mm with standard FAT (foul air trap height 50 mm)
 H = 65 mm with lower FAT (foul air trap height 30 mm)

Installation dimensions

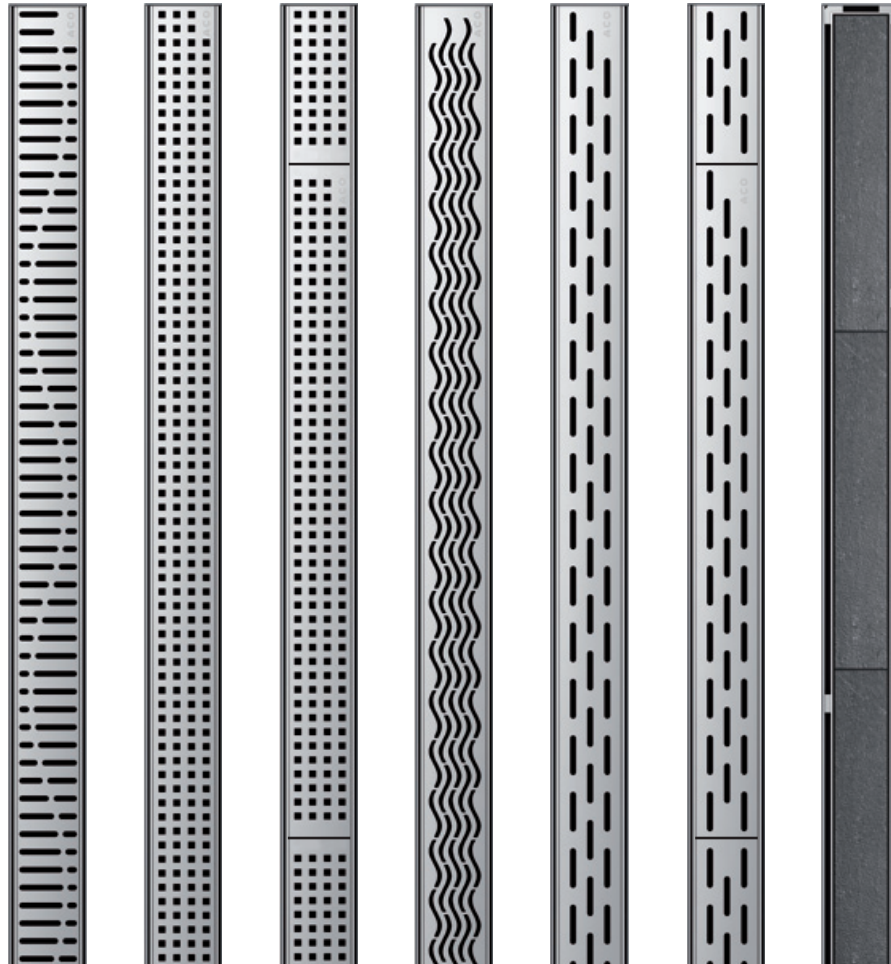
L1 (mm)	585	685	785	885	985	1085	1185
L2 (mm)	645	745	845	945	1045	1145	1245



Installation with vertical flange



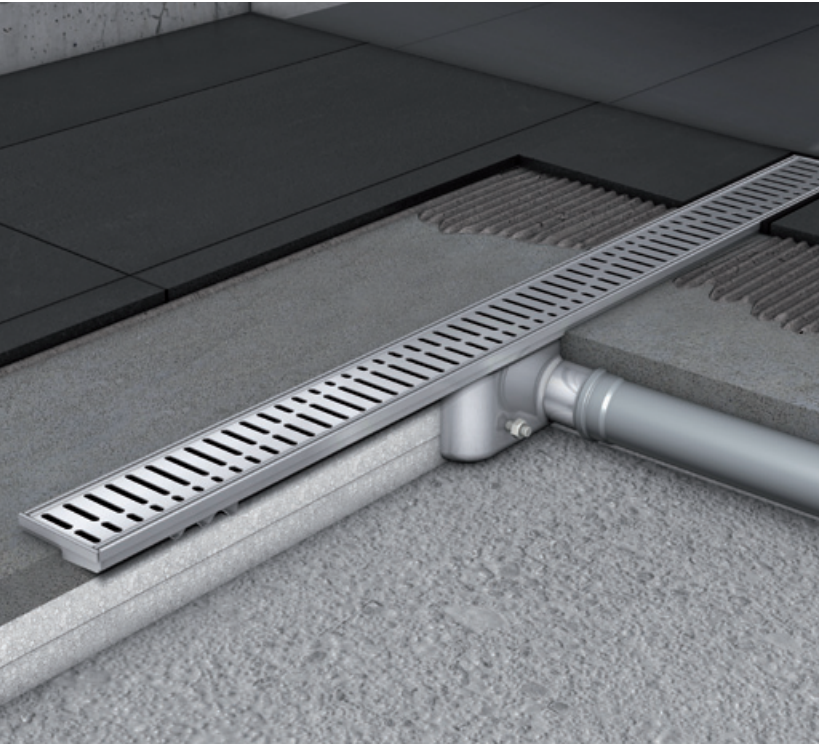
Low installation with vertical flange



**Order data –
Channel with grating**

Length L1 (mm)	Height H (mm)	Grating						Tile, height max.: 10 mm
		Wave	Square one part	Square three part	Water	Slot one part	Slot three part	
585	92	407908	407659	407666	407673	407680	407687	408665
	65	407715	407722	407729	407736	407743	407750	408686
685	92	407923	407660	407667	407674	407681	407688	408666
	65	407716	407723	407730	407737	407744	407751	408687
785	92	407915	407661	407668	407675	407682	407689	408667
	65	407717	407724	407731	407738	407745	407752	408688
885	92	407655	407662	407669	407676	407683	407690	408668
	65	407718	407725	407732	407739	407746	407753	408689
985	92	407656	407663	407670	407677	407684	407691	408669
	65	407719	407726	407733	407740	407747	407754	408690
1085	92	407657	407664	407671	407678	407685	407692	408670
	65	407720	407727	407734	407741	407748	407755	408691
1185	92	407658	407665	407672	407679	407686	407693	408671
	65	407721	407728	407735	407742	407749	407756	408692

The linear solution without flange

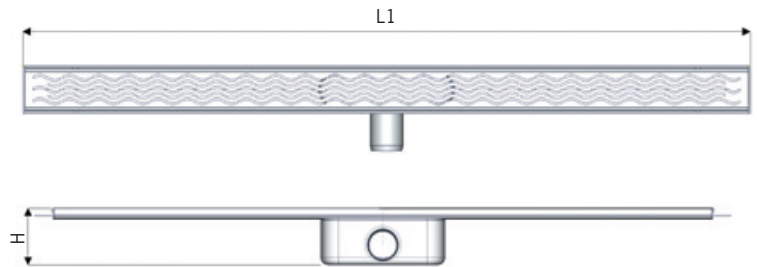


Article description

- drainage channel DN 50 for the shower area, suitable for all push-fit pipe socket systems
- installation height: 92 mm (50 mm FAT) or 65 mm (30 mm FAT)
- stainless steel channel and grating
- tested according to DIN EN 1253: flow rate 0.95 l/s, flow rate at entrance of shower: 0.5 l/s, flow rate against the wall: 0.8 l/s
- channel width: 70 mm
- channel body with lateral slope
- removable foul air trap of polypropylene
- brushed silk gloss gratings

Product advantages

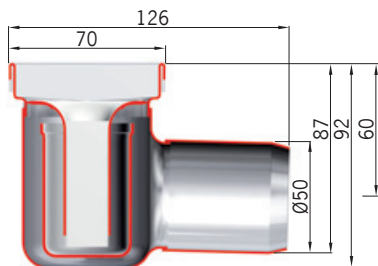
- welded stainless steel body, no risk of leakage
- low construction height very suitable for renovation
- easy removed and cleaned foul air trap, full access to the outlet pipe
- unique profile of gratings reduces overshooting of water (Patent pending)



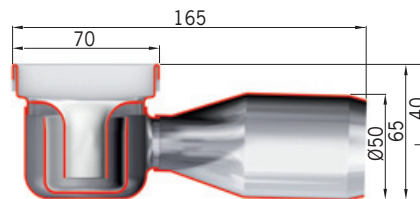
H = 92 mm with standard FAT (foul air trap height 50 mm)
 H = 65 mm with lower FAT (foul air trap height 30 mm)

Installation dimensions

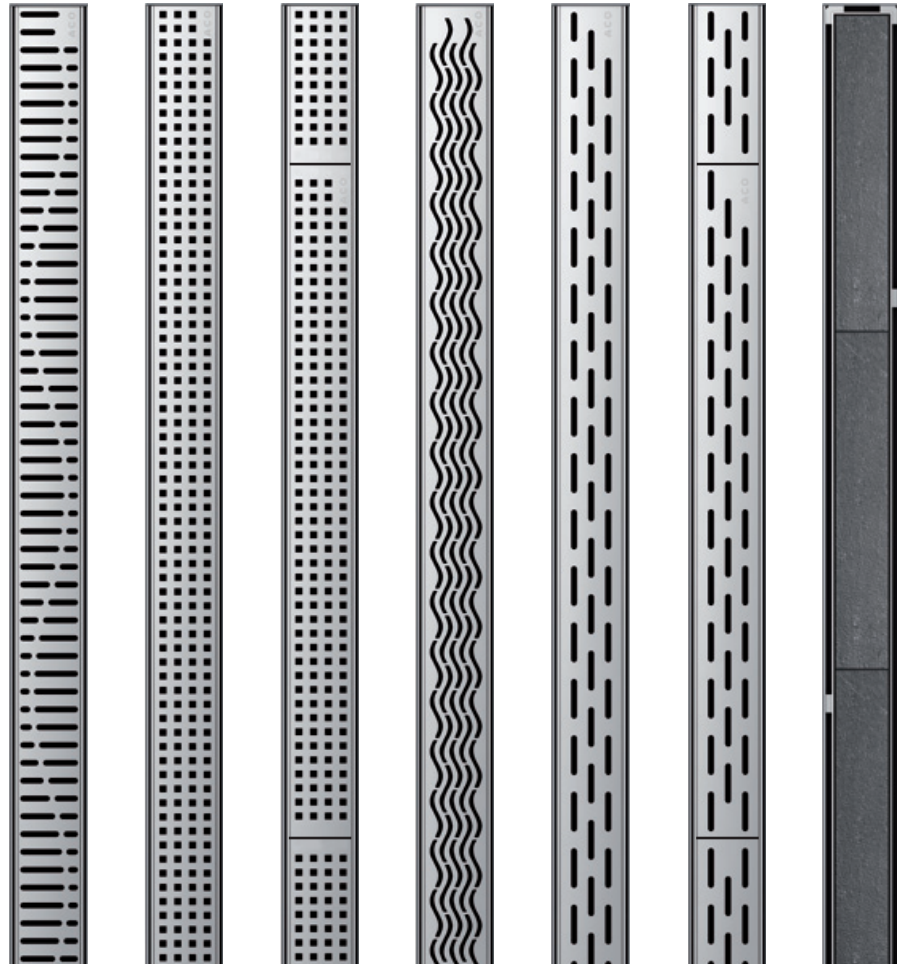
L1 (mm)	585	685	785	885	985	1085	1185
---------	-----	-----	-----	-----	-----	------	------



Installation without flange



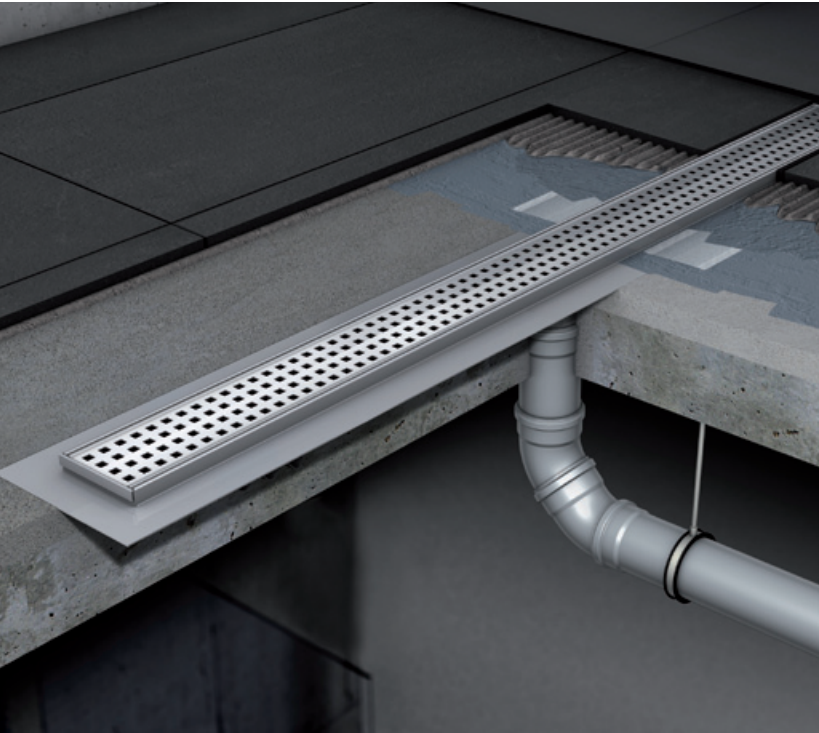
Low installation without flange



**Order data –
Channel with grating**

Length L1 (mm)	Height H (mm)	Grating						Tile, height max.: 10 mm
		Wave	Square one part	Square three part	Water	Slot one part	Slot three part	
585	92	406181	404508	404516	406460	402739	403781	408658
	65	406173	406468	407708	406299	405751	405743	408679
685	92	406182	404509	404517	406461	402740	403782	408659
	65	406174	406469	407709	406300	405752	405744	408680
785	92	406183	404510	404518	406462	402741	403783	408660
	65	406175	406470	407710	406301	405753	405745	408681
885	92	406184	404511	404519	406463	402742	403784	408661
	65	406176	406471	407711	406302	405754	405746	408682
985	92	406185	404512	404520	406464	402743	403785	408662
	65	406177	406472	407712	406303	405755	405747	408683
1085	92	406186	404513	404521	406465	402744	403786	408663
	65	406178	406473	407713	406304	405756	405748	408684
1185	92	406187	404514	404522	406466	402745	403787	408664
	65	406179	406474	407714	406305	405757	405749	408685

The linear solution without foul air trap

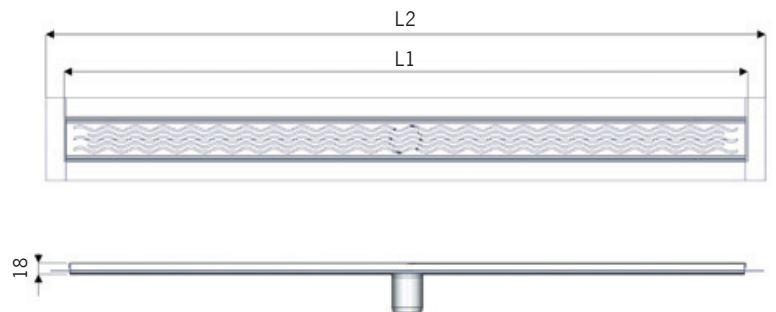


Article description

- drainage channel DN 50 for the shower area, suitable for all push-fit pipe socket systems
- installation height: 18 mm*
- stainless steel channel and grating
- tested according to DIN EN 1253: flow rate 1.5 l/s, flow rate at entrance of shower: 0.5 l/s, flow rate against the wall: 1.0 l/s
- channel width: 70 mm
- channel body with lateral slope
- brushed silk gloss gratings
- surrounding, integral flange is optional

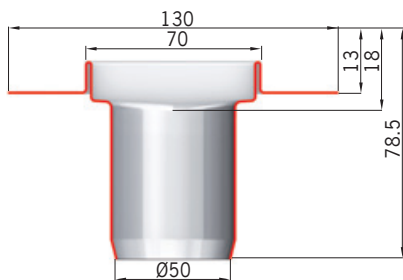
Product advantages

- welded stainless steel body, no risk of leakage
- low construction height very suitable for renovation
- full access to the outlet pipe
- high flow rate
- unique profile of gratings reduces overshooting of water (Patent pending)

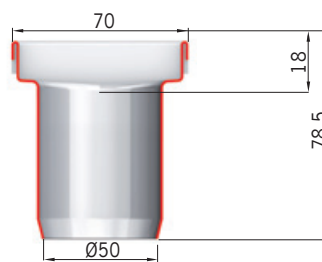


Installation dimensions

L1 (mm)	585	685	785	885	985	1085	1185
L2 (mm)	645	745	845	945	1045	1145	1245

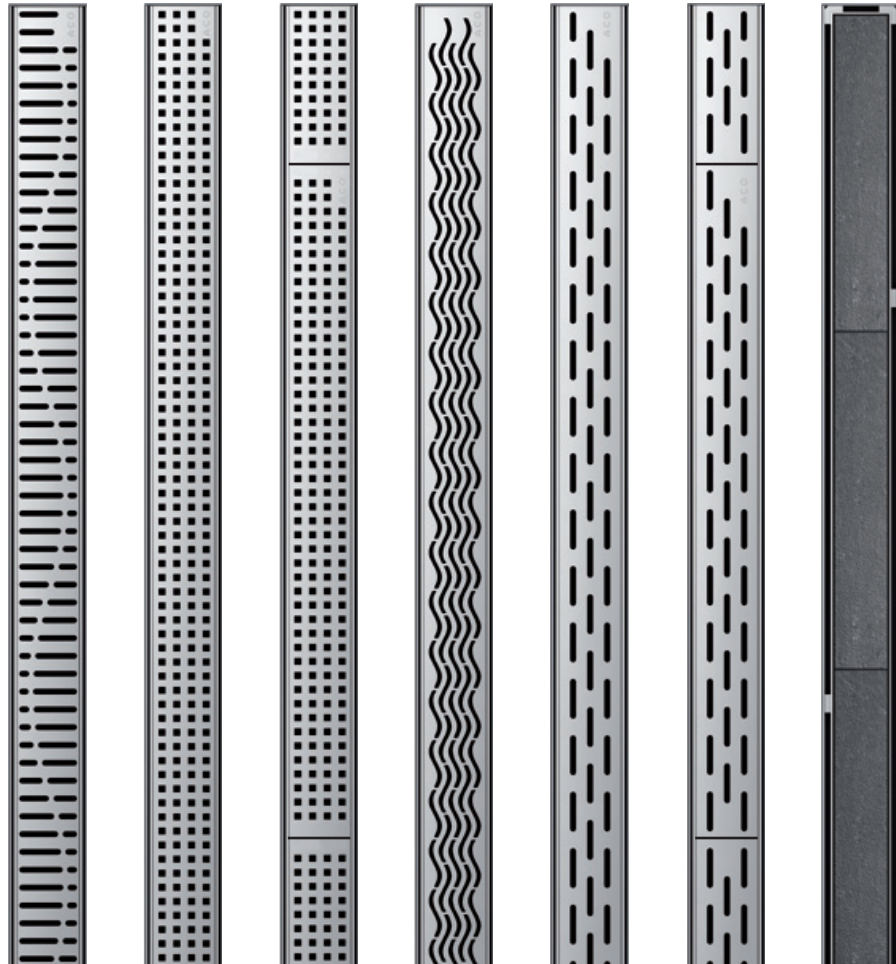


Low installation with flange



Low installation without flange

*Please note: A foul air trap has to be installed somewhere else in the pipe system



**Order data –
Channel with grating**

Length L1 (mm)	Flange	Grating						Tile, height max.: 10 mm
		Wave	Square one part	Square three part	Water	Slot one part	Slot three part	
585	with	407757	407764	407771	407778	407785	407792	408693
	without	407799	407806	407814	407821	407828	407835	408700
685	with	407758	407765	407772	407779	407786	407793	408694
	without	407800	407807	407815	407822	407829	407836	408701
785	with	407759	407766	407773	407780	407787	407794	408695
	without	407801	407808	407816	407823	407830	407837	408702
885	with	407760	407767	407774	407781	407788	407795	408696
	without	407802	407809	407817	407824	407831	407838	408703
985	with	407761	407768	407775	407782	407789	407796	408697
	without	407803	407810	407818	407825	407832	407839	408704
1085	with	407762	407769	407776	407783	407790	407797	408698
	without	407804	407812	407819	407826	407833	407840	408705
1185	with	407763	407770	407777	407784	407791	407798	408699
	without	407805	407813	407820	407827	407834	407841	408706

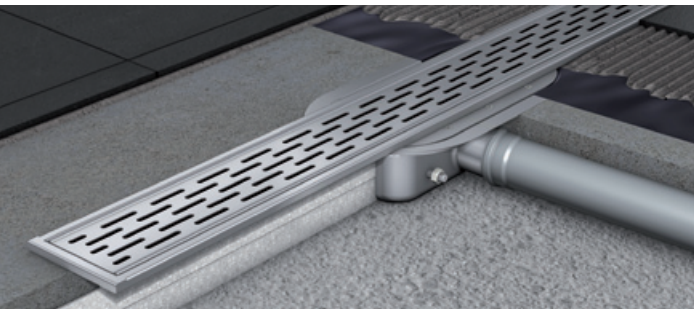
ACO ShowerDrain F-line – flexible installation

The new ACO ShowerDrain F range consists of two parts. The first part of the shower drain is the gully body with foul air trap. This is equipped with a flange, enabling reliable connection with the waterproof membrane by screwing. The second part is the channel itself and the grate, which is only 8 mm high. The main advantage of the ACO ShowerDrain F range is the channel with the grate of the same height as the tiles.

Like that the channel position can be chosen when tiles are already being laid. There is a 10 mm tolerance of the channel vs. the gully in all four directions.

The same as ACO ShowerDrain C also the range F has a high flow rate, a very low construction height and easy maintenance.

The base is stainless steel, used for production of the shower drain, the gully and the grate. The foul air trap is made from plastics. Stainless steel parts have been finished with pickle passivating; grates have been silk gloss brushed.

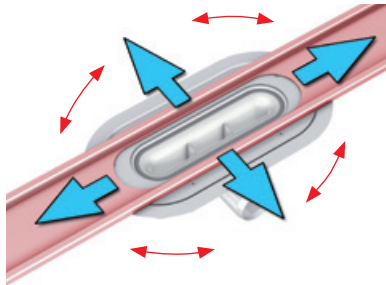


■ **Two part solution**

The ACO ShowerDrain F shower channel with low installation height and foul air trap

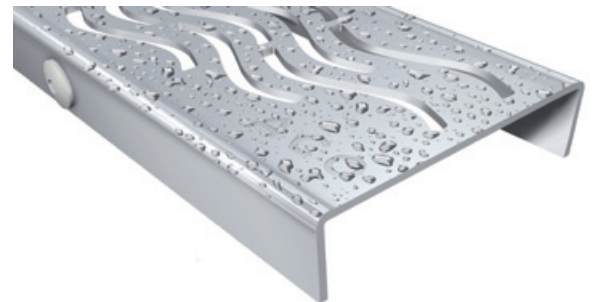
Variability of shower drain location

The ACO ShowerDrain F is only 8 mm high. It is the same height as or lower than most standard floor tiles. It is installed together with tiles laying, after floor insulation. That enables a relatively big variability of the shower drain body positioning, i.e. up to 10 mm or maximum 3° in all directions. Due to this fact the complicated measuring and tiles layout counting and consequent tiles cutting are avoided. The final appearance is always perfect.



Low construction height

The ACO ShowerDrain F construction height in its standard version (50 mm water column in the odour trap) is only 87 mm. The building height of the lowered version (30 mm water column in the odour trap) is the incredible 67 mm. These values enable very wide application of ACO ShowerDrain F in the most modern new buildings and during ambitious reconstructions.



All the ShowerDrain F gratings are silk gloss gratings. The silk gloss gives a smooth surface with a semi gloss finish. The ShowerDrain F gratings are therefore easy to maintain as water and soap residues can be easily removed

Easy maintenance

The user's comfort is increased by the efficiency of the foul air trap and its easy cleaning. Syphon (foul air trap) is made out of plastics. The reliable seal is injection-moulded together with the foul air trap. Due to this construction, there is no risk of losing of the sealing, or another malfunction. The foul air trap can be easily removed from the shower channel. It is easy to disassemble it into two separate parts and clean it by hand or in a dish washer.



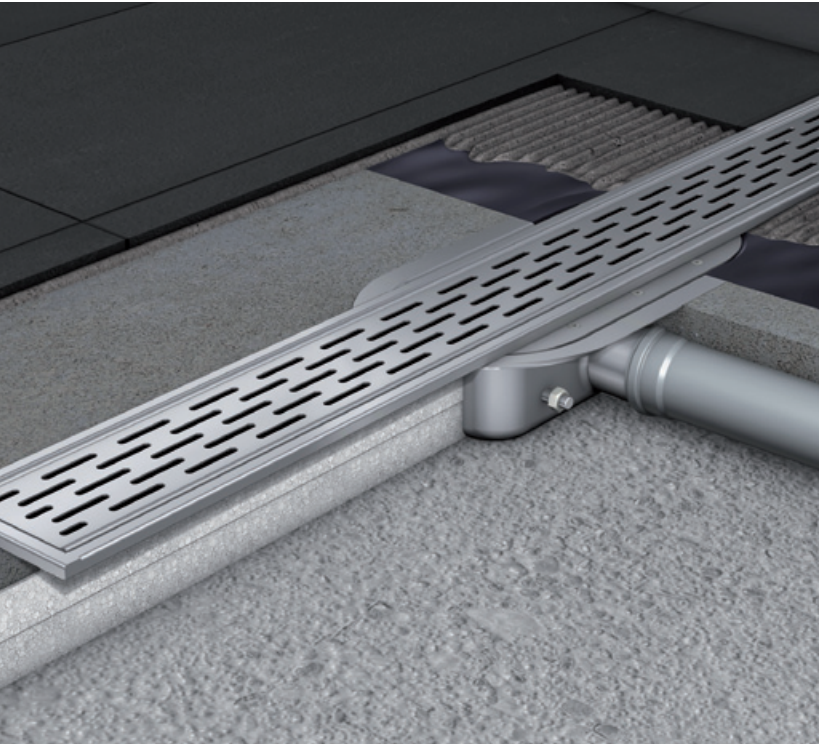
ACO ShowerDrain F versions

The shower drain is made in the width 100 mm in four lengths – 685 mm, 785 mm, 885 mm and 985 mm in two versions of gullies:

- standard height (50 mm FAT)
- low height (30 mm FAT)

The product range has four elegant stainless steel gratings in a one-piece or three-piece version. The three-piece gratings are designed for installation under a door. The gratings have a perfect surface finishing. They are pickled and silk gloss brushed.

The linear solution without flange

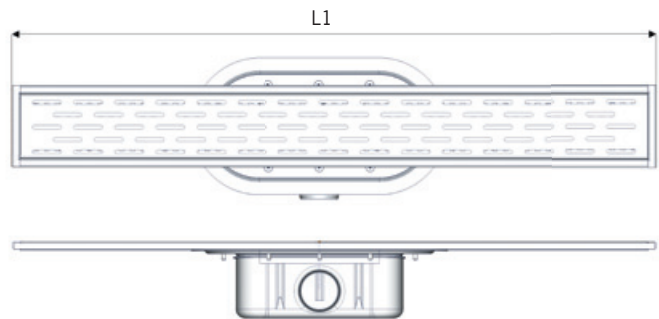


Article description

- two part shower channel system, gully body can be installed separately from channel
- stainless steel channel, gully and grating
- gully provided with screwed 3 mm clamping flange for water proofing seal
- drainage channel with vertical outlet DN 50 for the shower area, suitable for all push-fit pipe socket systems
- installation height for gully: 79 mm (50 mm FAT) or 54 mm (30 mm FAT)
- height of channel with grating: 8mm
- tested according to DIN EN 1253: flow rate 0.95 l/s, flow rate at entrance of shower: 0.4 l/s, flow rate against the wall: 0.75 l/s
- channel width: 100 mm
- removable foul air trap of polypropylene
- silk gloss brushed grates and channel

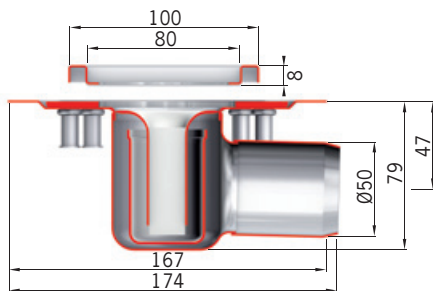
Product advantages

- welded stainless steel body, no risk of leakage
- low construction height very suitable for renovation
- easy removed and cleaned foul air trap, full access to the outlet pipe
- unique profile of gratings reduces overshooting of water (Patent pending)

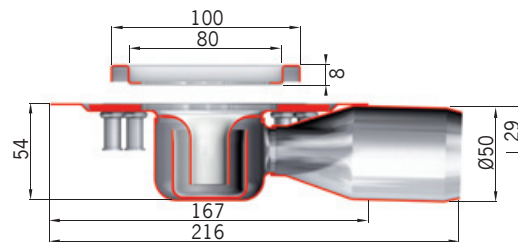


Installation dimensions

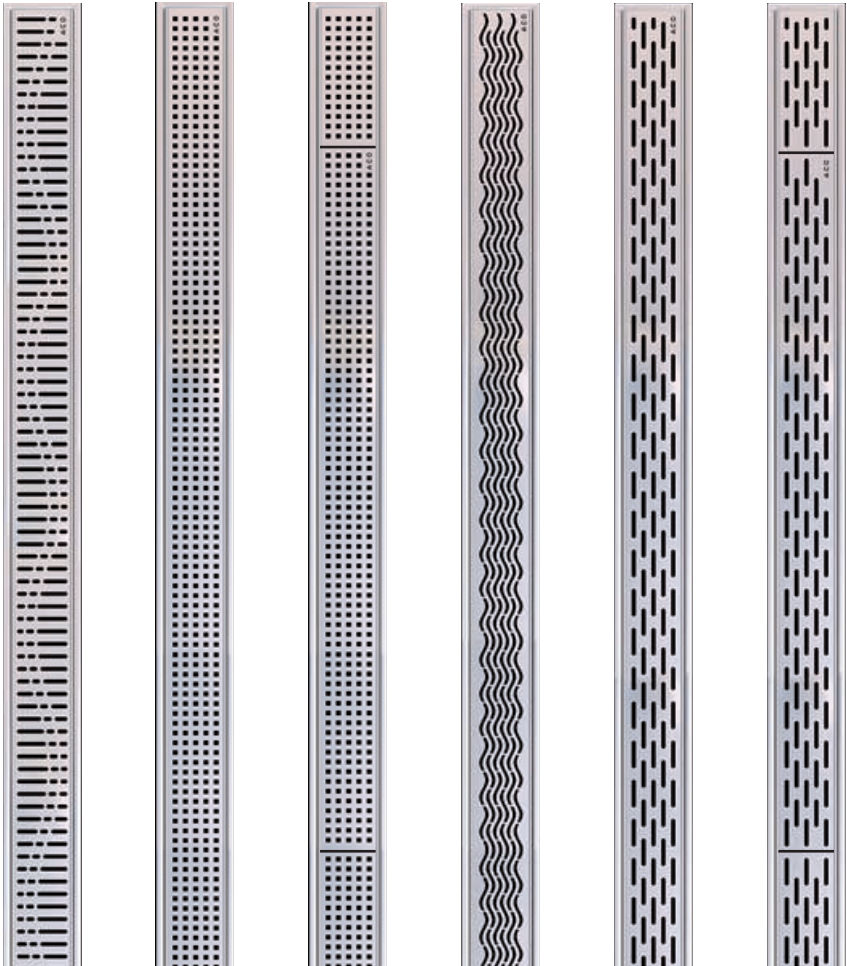
L1 (mm)	685	785	885	985
---------	-----	-----	-----	-----



Installation without flange



Low installation without flange



Order data – Channel with grating

Length L1 (mm)	Height H (mm)	Grating					
		Wave	Square one part	Square three part	Water	Slot one part	Slot three part
685	8	407842	407846	407849	407853	407857	407861
785	8	407843	407847	407850	407854	407858	407862
885	8	407844	407848	407851	407855	407859	407863
985	8	407845	407907	407852	407856	407860	407864

Order data – Gully body

Gully body	Height H (mm)	Length (mm)	Width (mm)	Art. no.
Standard version	79	312	167	407969
Low version	59	312	167	407970